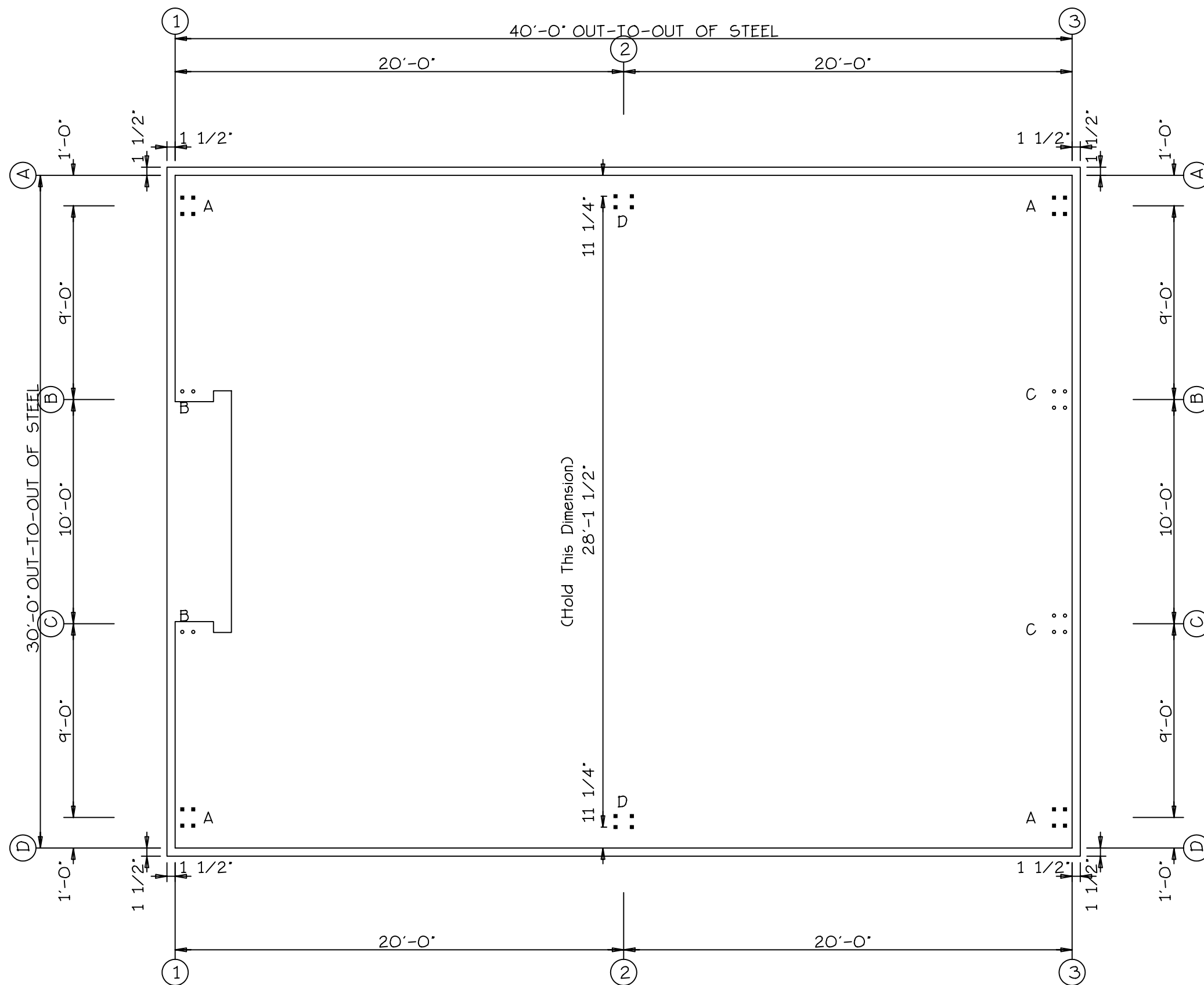


o Dia= 5/8"

▪ Dia= 3/4"



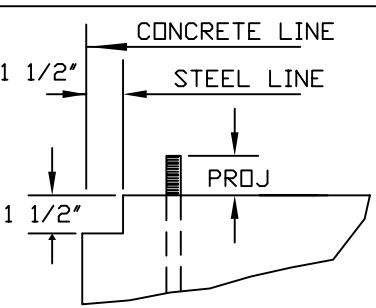
### ANCHOR BOLT PLAN

NOTE: All Base Plates • 100'-0" (U.N.)



**MetalBuildingDepot.Com**<sup>®</sup>  
an ICON Company

DESCRIPTION: ANCHOR BOLT PLAN						
SIZE: 30.0 x 40.0 x 12.0						
CUSTOMER: 30x40x10				PROJECT: # Project		
LOCATION:						
DRN. BY MBD	CK'D BY M.A./M.M.	DATE 1/16/05	SCALE NONE	JOB NO.	SHEET NO. of	



CONCRETE NOTCH AND ANCHOR BOLT PROJECTION