

STEEL HOUSES

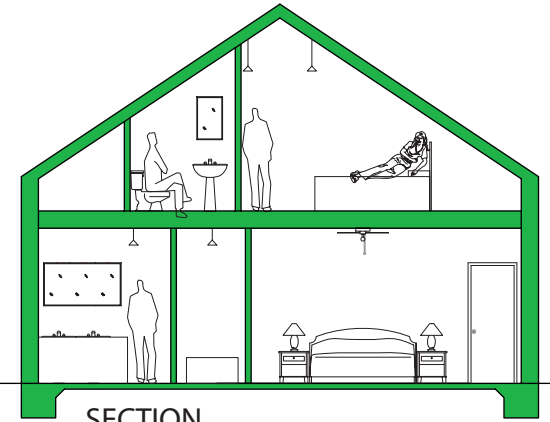
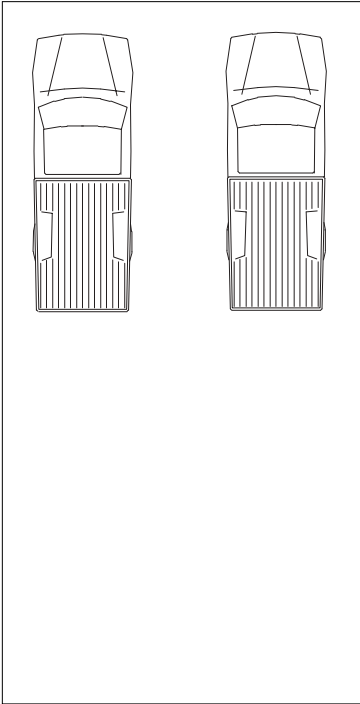
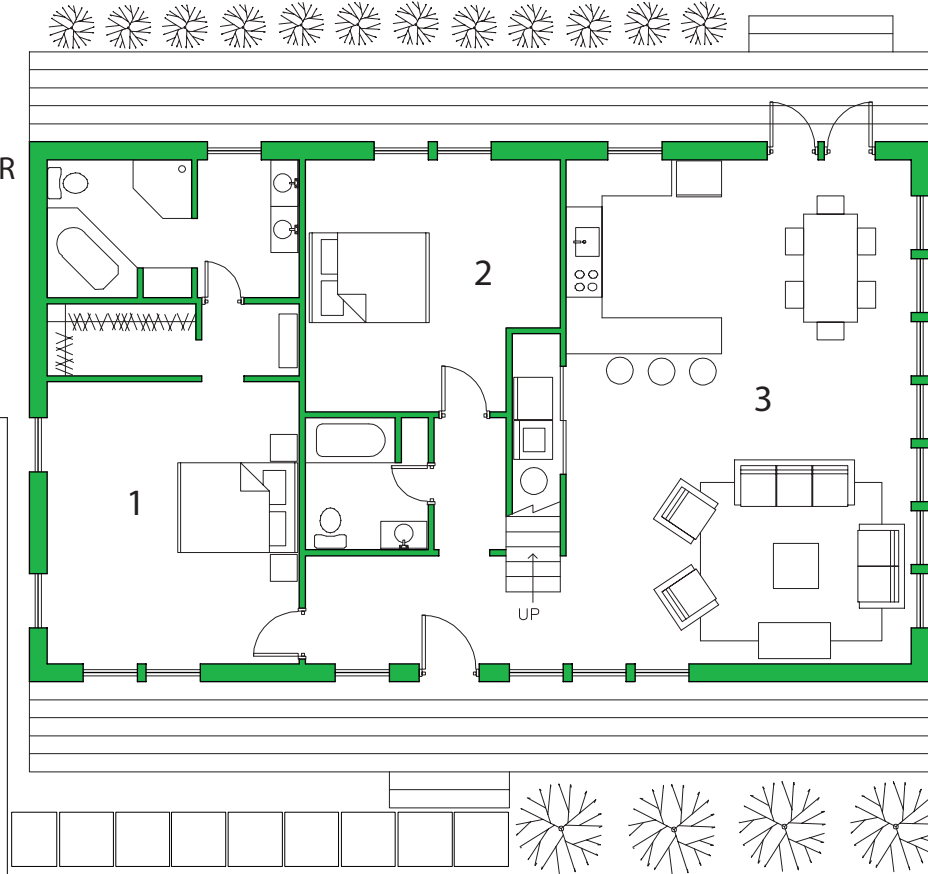


MetalBuildingDepot.Com[®]

an ICON Company

THE BRAZOS

FIRST FLOOR

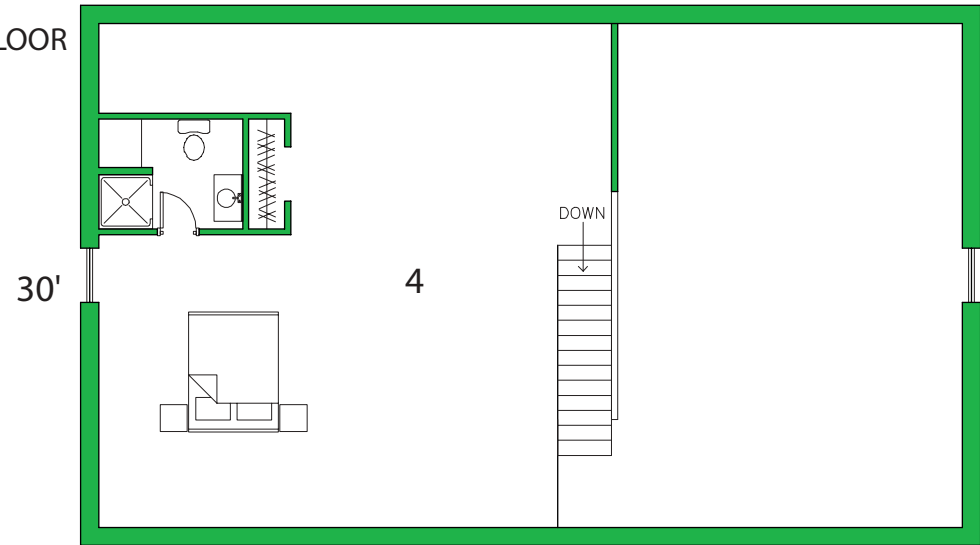


SECTION

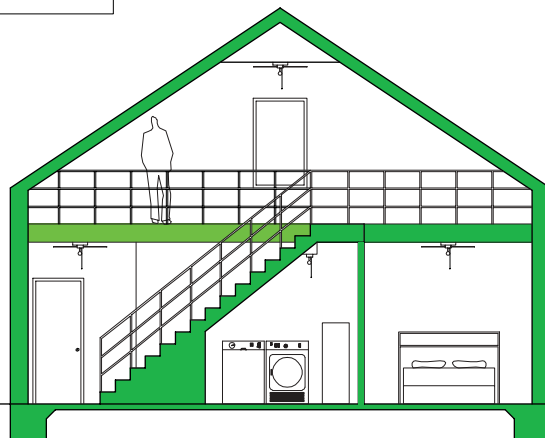
1500+LOFT SQ. FT.

- 1.MASTER BEDROOM- 14' X 15'-8"
- 2.BEDROOM- 14'-2" X 14'
- 3.KITCHEN/DINNING/LIVING- 19'-2" X 28'
- 4.LOFT- 28'-6" X 28'

SECOND FLOOR



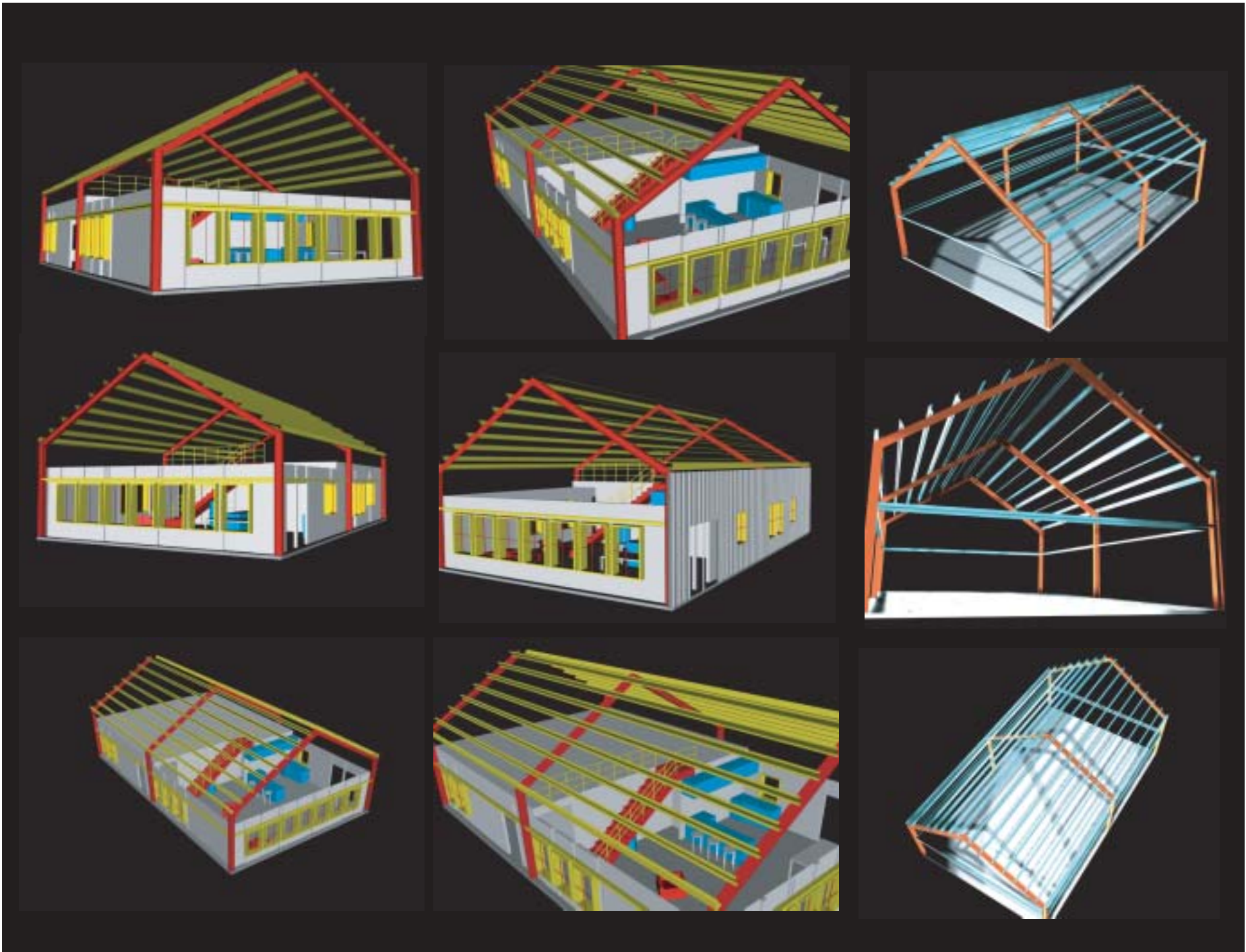
SECTION



MetalBuildingDepot.Com[®]
an ICON Company

Copyright © 2003-2005 MetalBuildingDepot™. All Rights Reserved.

THE BRAZOS



MetalBuildingDepot.Com[®]
an ICON Company

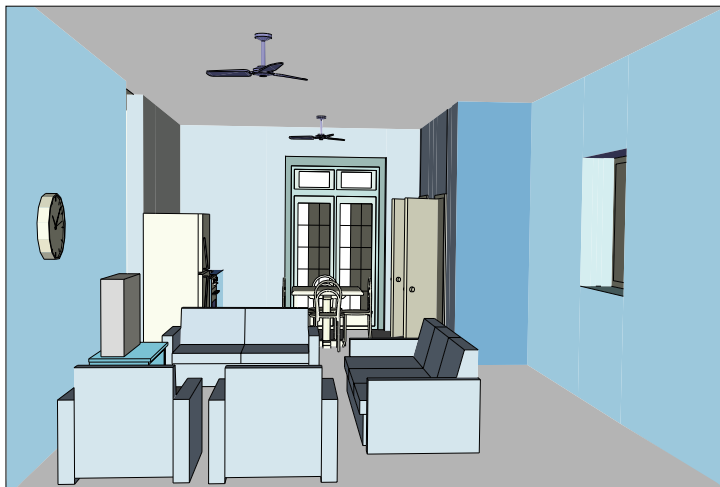
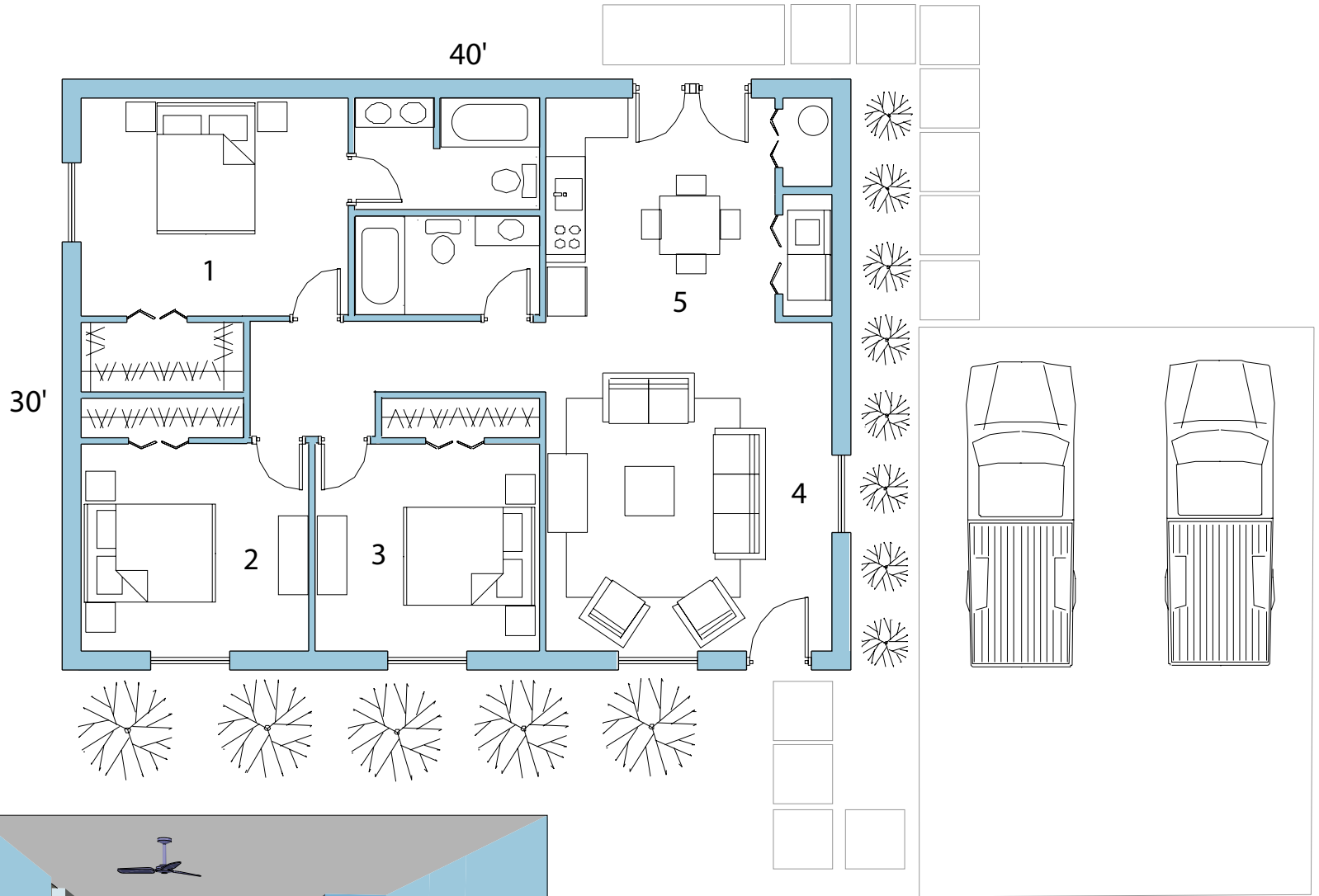
Copyright © 2003-2005 MetalBuildingDepot™. All Rights Reserved.

The perfect home for starting a family or first time home buyers. If you're looking for affordability these two bedroom and three bedroom 1200 and 1500 Sq. Ft. homes are perfect. Whether it is Rosedale with its division of the family space and bedrooms or Brookside with its bedrooms surrounding the family spaces, these cozy homes are the first choice for affordability.

1200 SQ. FT. HOMES



ROSEDALE

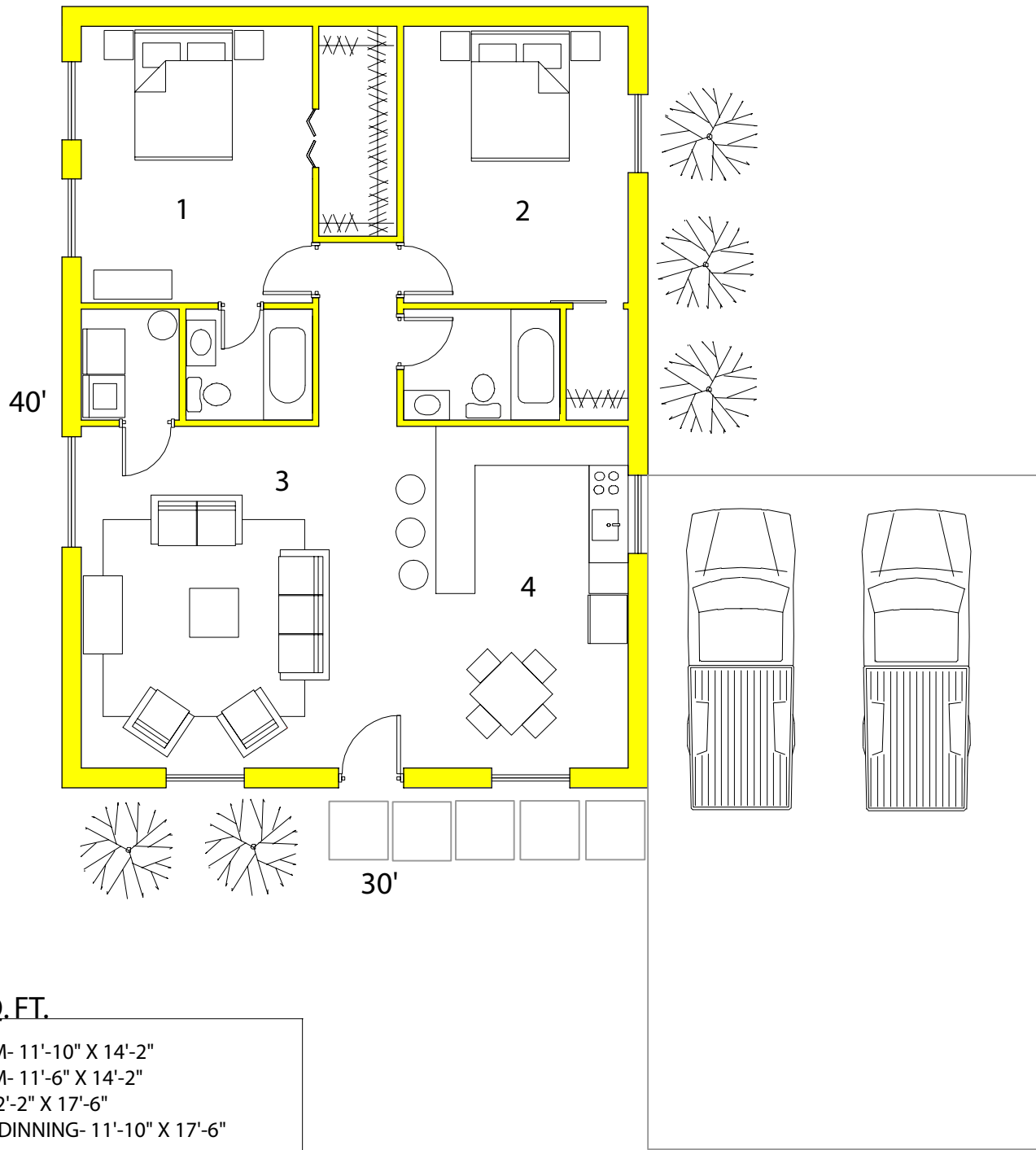


1200 SQ. FT.

- 1. MASTER BEDROOM- 13'-6" X 11'
- 2. BEDROOM- 11'-6" X 10'-6"
- 3. BEDROOM- 11'-4" X 10'-6"
- 4. LIVING ROOM- 14'-6" X 13'2"
- 5. KITCHEN/DINNING/UTILITY- 14'-6" X 11'-4"



MetalBuildingDepot.Com[®]
an ICON Company

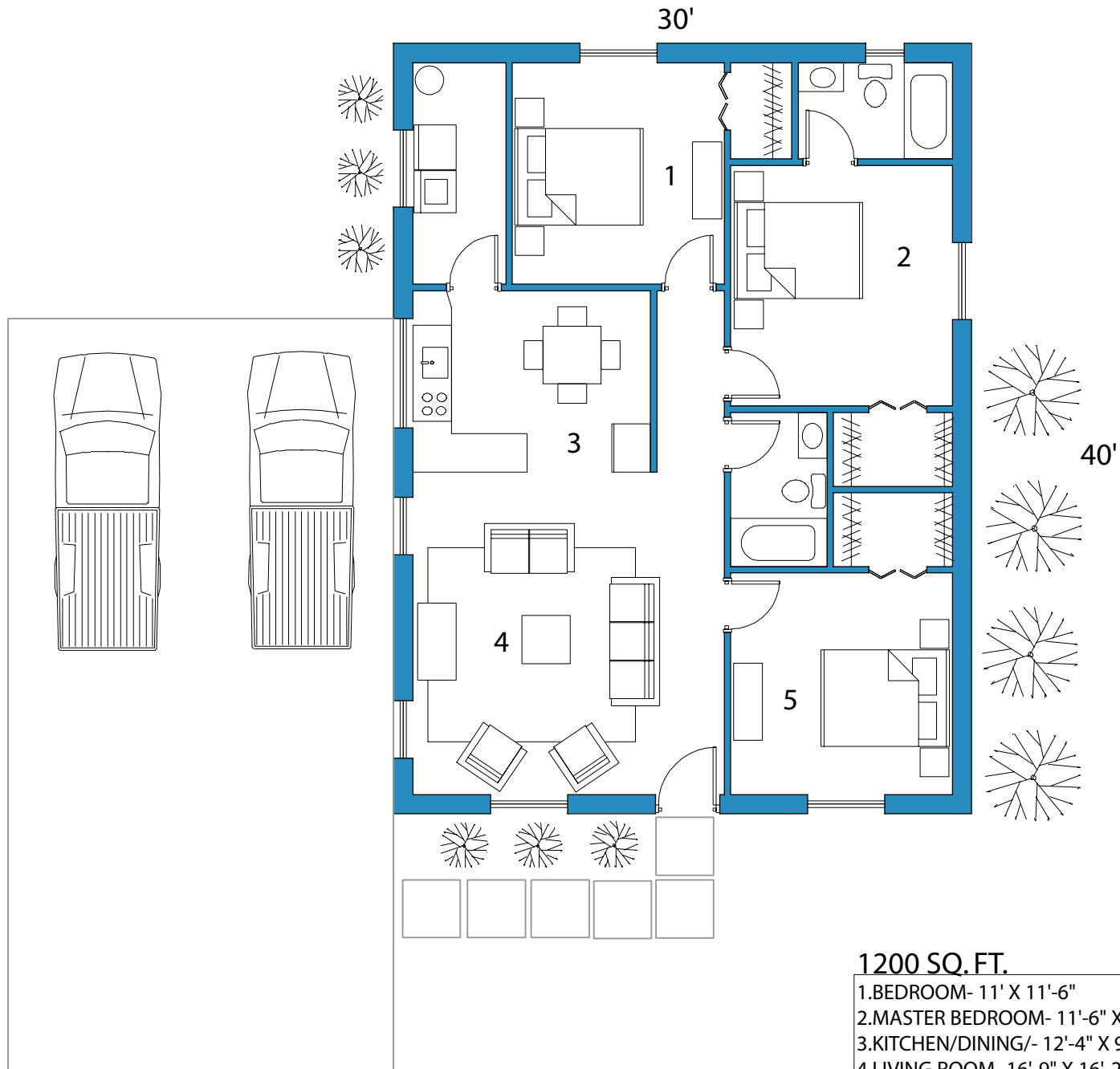


1200 SQ. FT.

- 1. BEDROOM- 11'-10" X 14'-2"
- 2. BEDROOM- 11'-6" X 14'-2"
- 3. LIVING- 12'-2" X 17'-6"
- 4. KITCHEN/DINNING- 11'-10" X 17'-6"



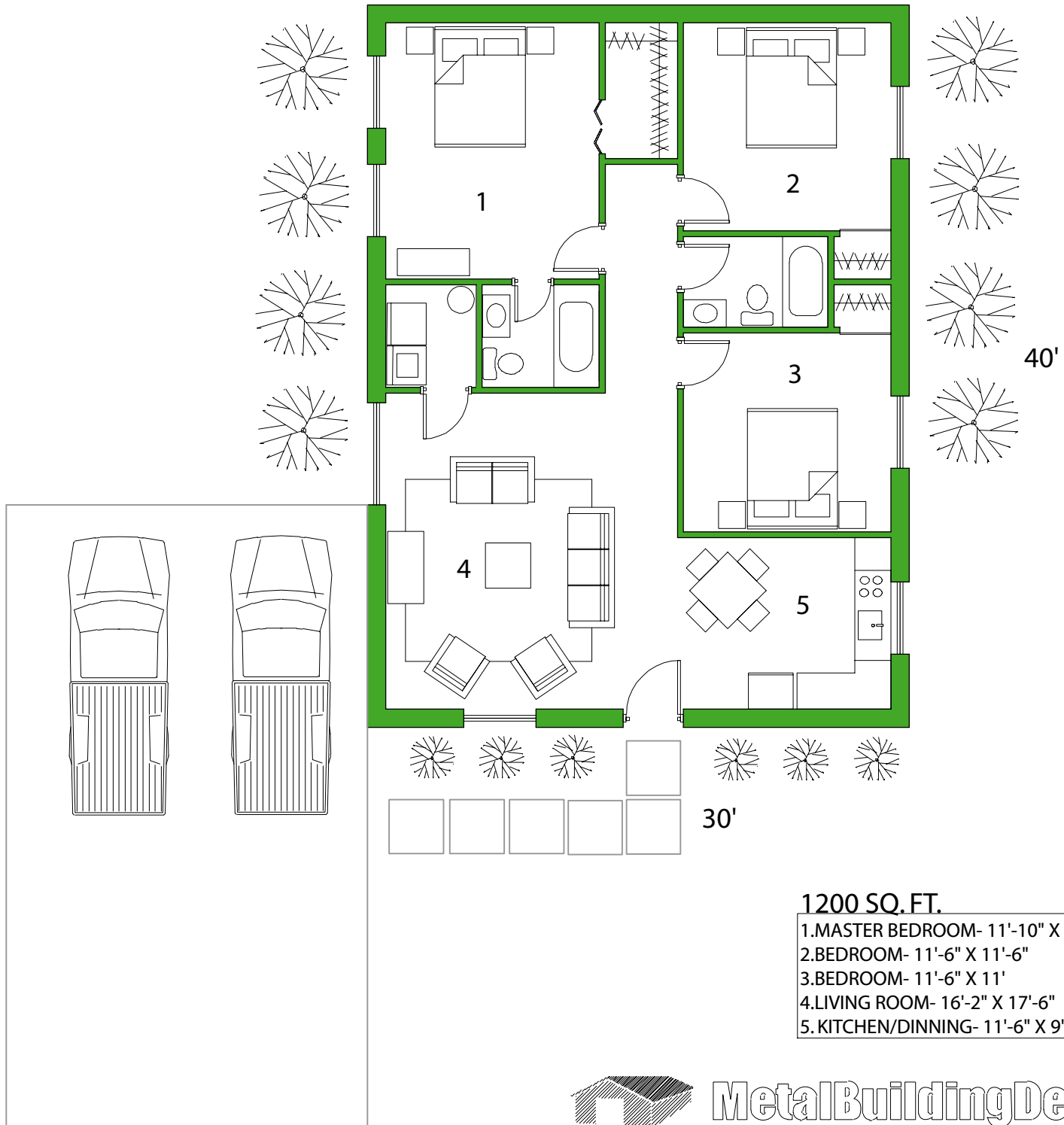
SOUTH HAMPTON



MetalBuildingDepot.Com[®]
an ICON Company

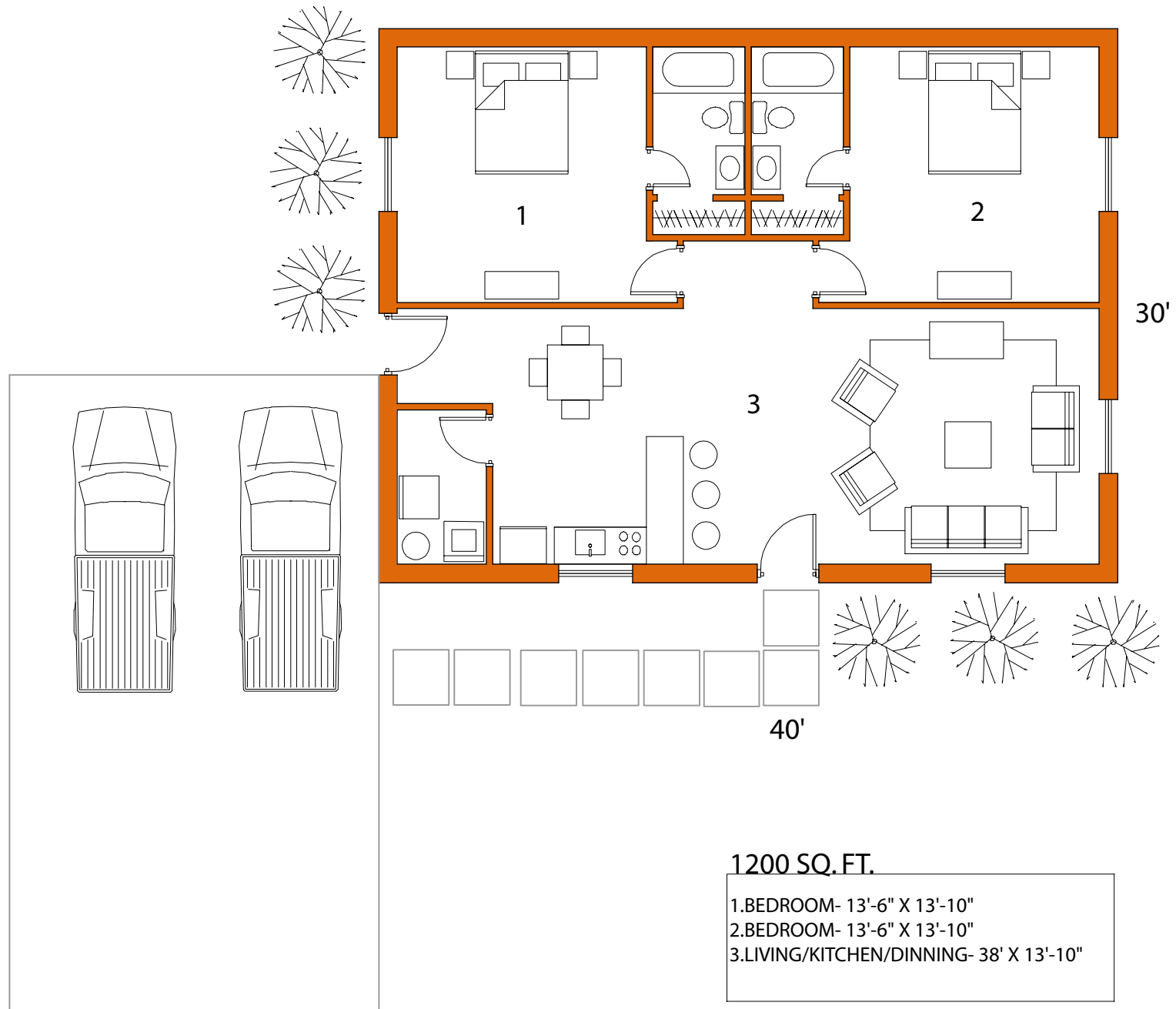
Copyright © 2003-2005 MetalBuildingDepot™. All Rights Reserved.

SPRING



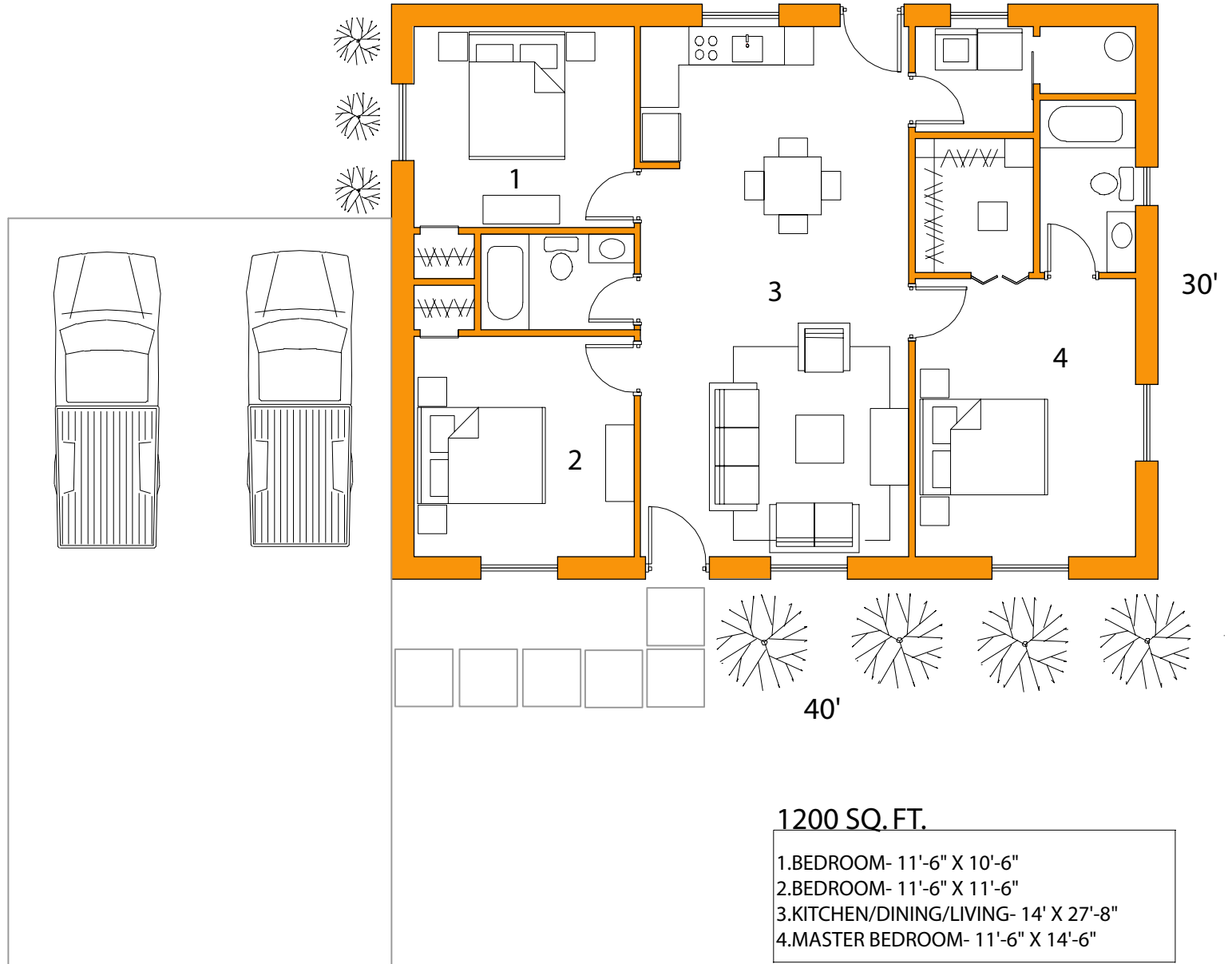
MetalBuildingDepot.Com
an ICON Company

CASTAWAY

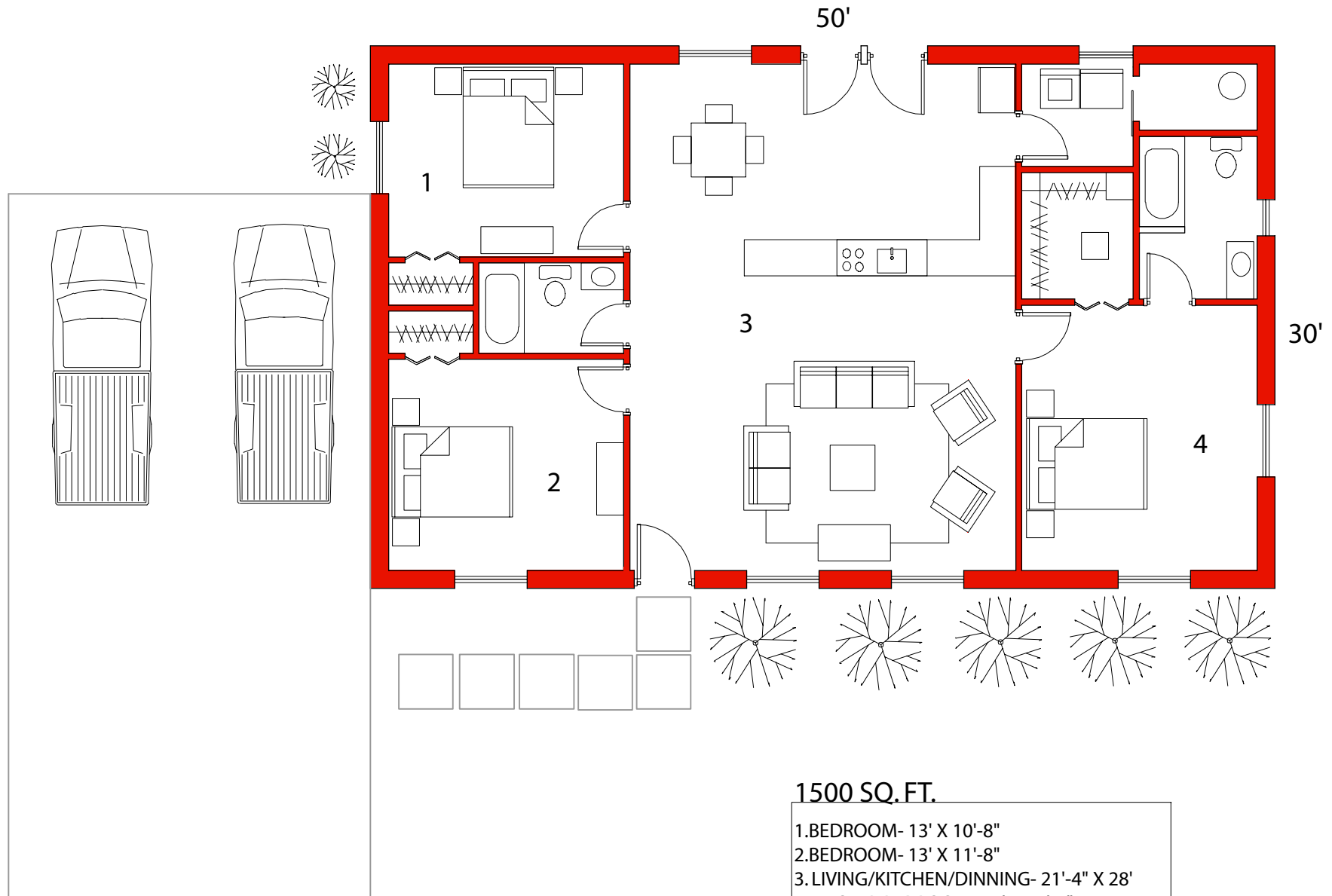


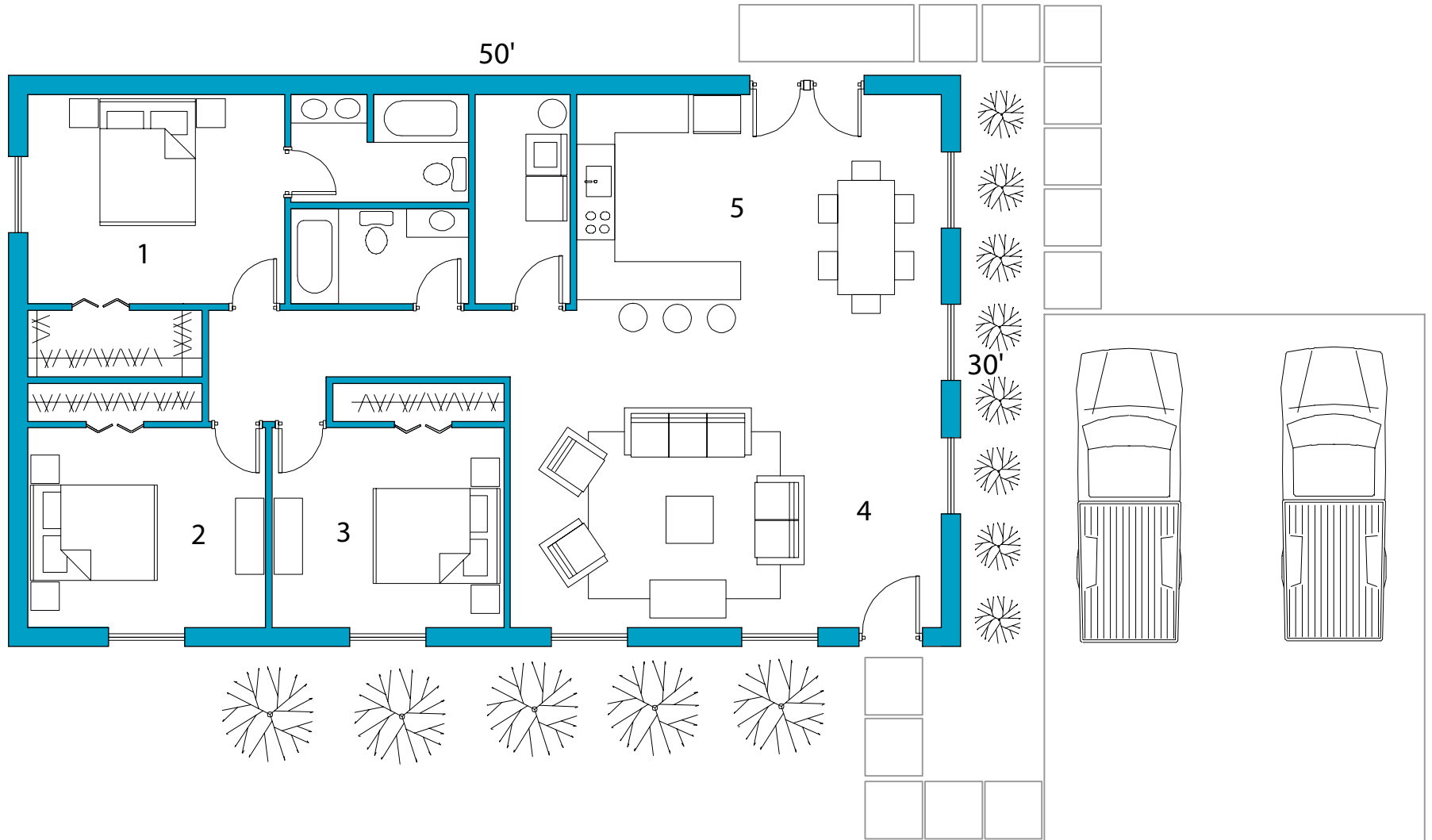
MetalBuildingDepot.Com®
an ICON Company

BROOKSIDE



MetalBuildingDepot.Com[®]
an ICON Company

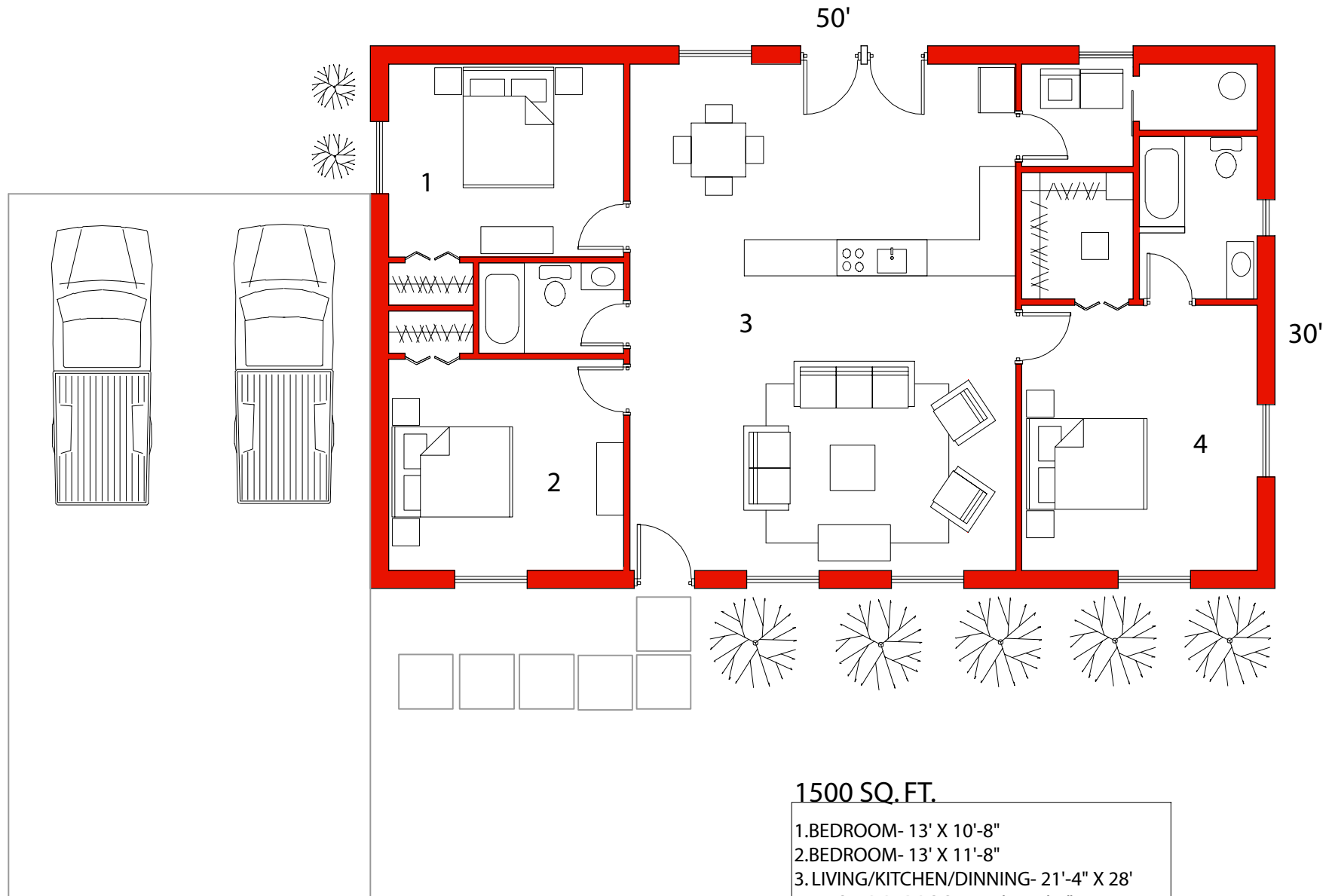




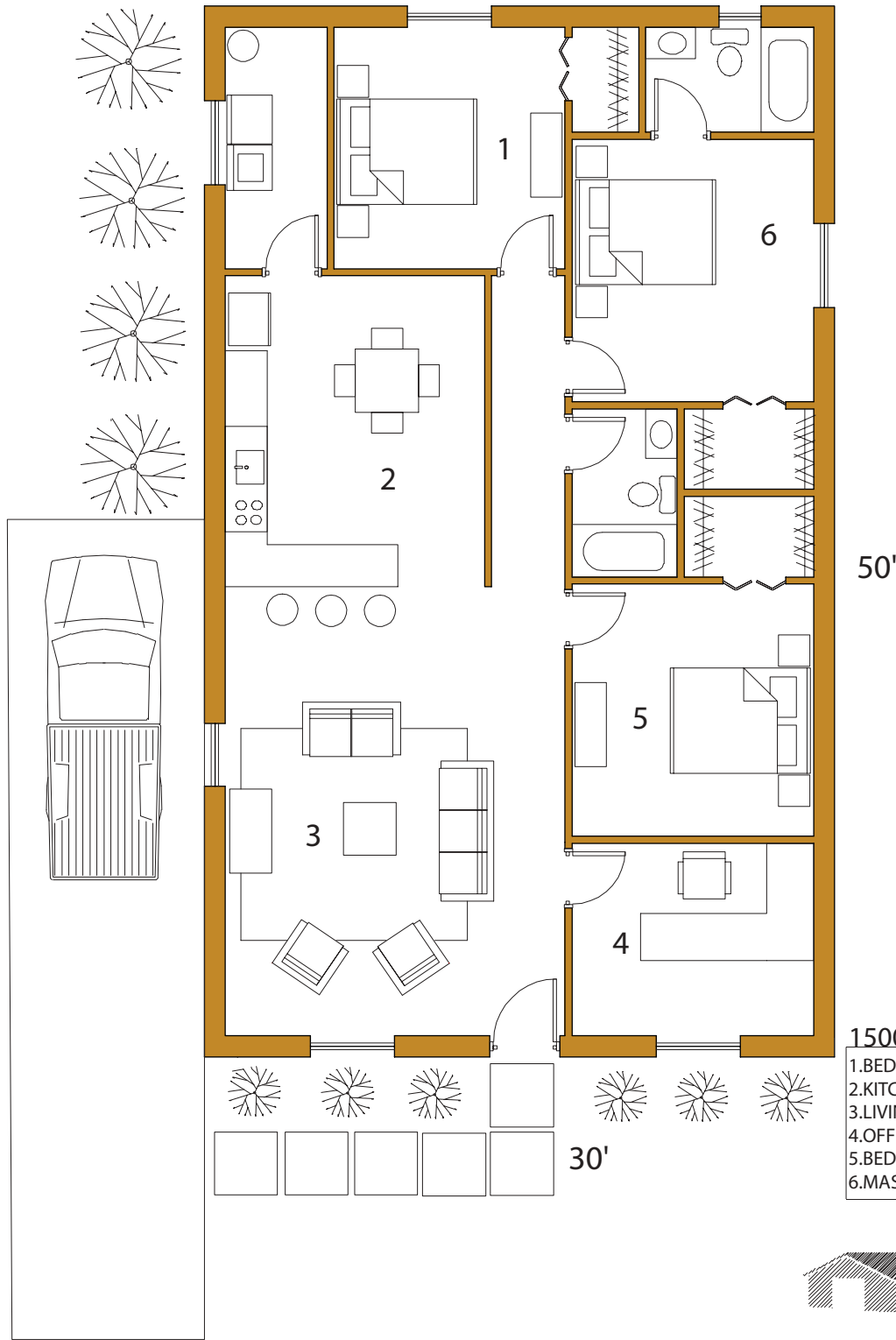
1500 SQ. FT.

- 1. MASTER BEDROOM- 13'-6" X 11'
- 2. BEDROOM- 12'-6" X 10'-6"
- 3. BEDROOM- 12'-2" X 10'-6"
- 4. LIVING ROOM- 22'-8" X 13'-2"
- 5. KITCHEN/DINNING- 19'-2" X 11'-4"



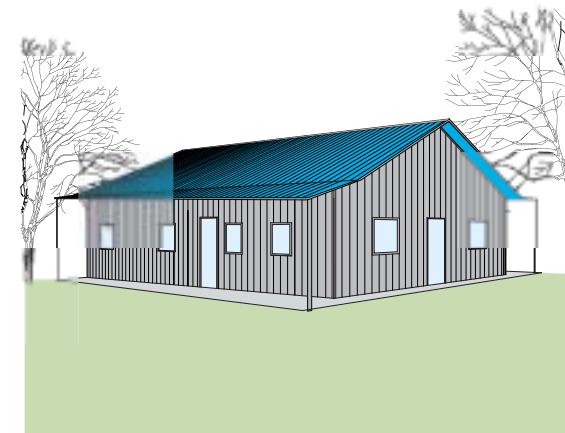


HILLSIDE



1500 SQ. FT.

- 1. BEDROOM- 11' X 11'-6"
- 2. KITCHEN/DINING- 12'-4" X 14'-9"
- 3. LIVING ROOM- 18'-6" X 18'-6"
- 4. OFFICE/STUDY- 11'-6" X 9'-2"
- 5. BEDROOM- 11'-6" X 12'
- 6. MASTER BEDROOM- 11'-6" X 12'-6"



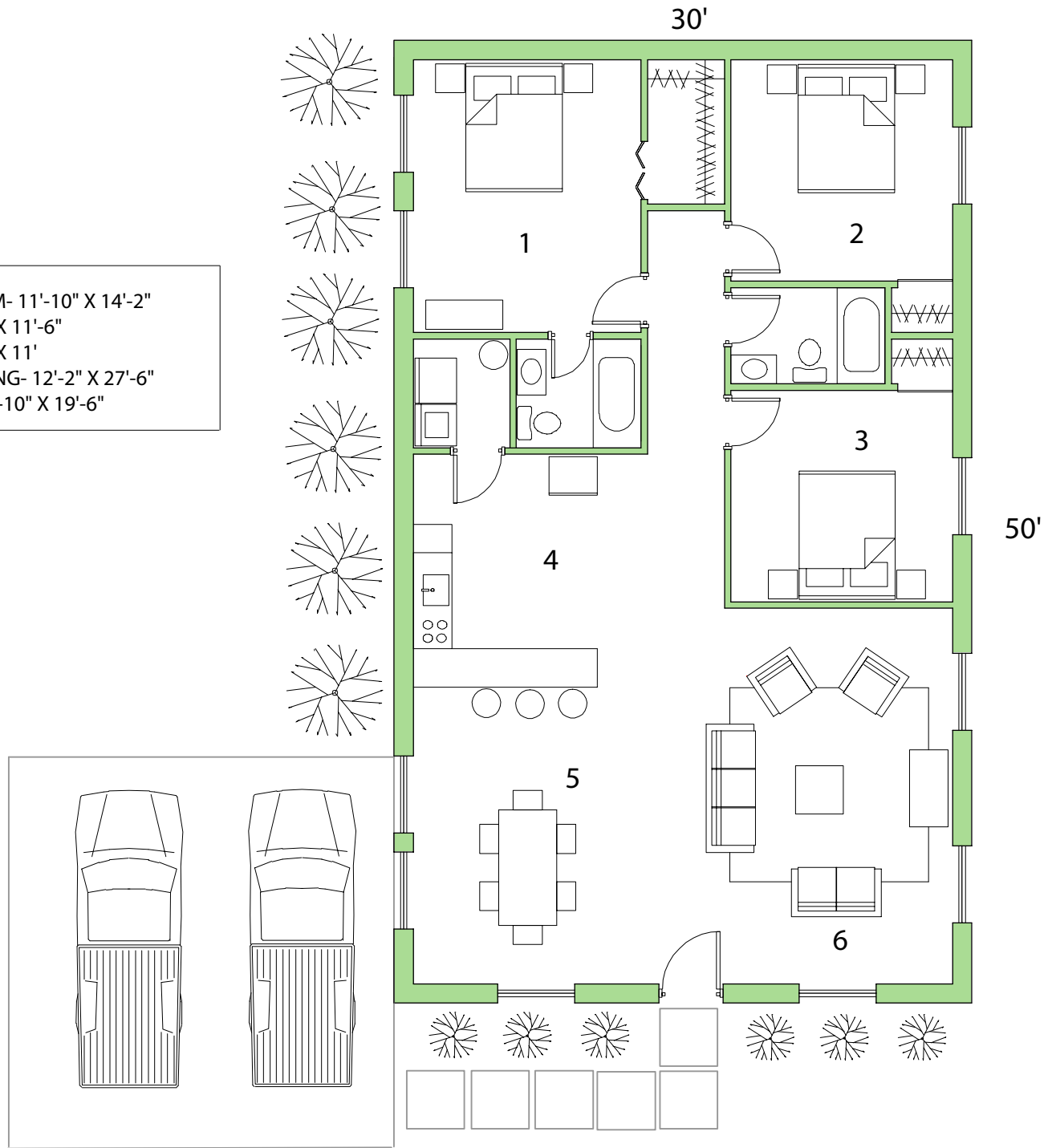
MetalBuildingDepot.Com[®]
an ICON Company

Copyright © 2003-2005 MetalBuildingDepot™. All Rights Reserved.

COTTAGE

1500 SQ. FT.

- 1. MASTER BEDROOM- 11'-10" X 14'-2"
- 2. BEDROOM- 11'-6" X 11'-6"
- 3. BEDROOM- 11'-6" X 11'
- 4/5. KITCHEN/DINNING- 12'-2" X 27'-6"
- 6. LIVING ROOM- 11'-10" X 19'-6"



MetalBuildingDepot.Com[®]
an ICON Company

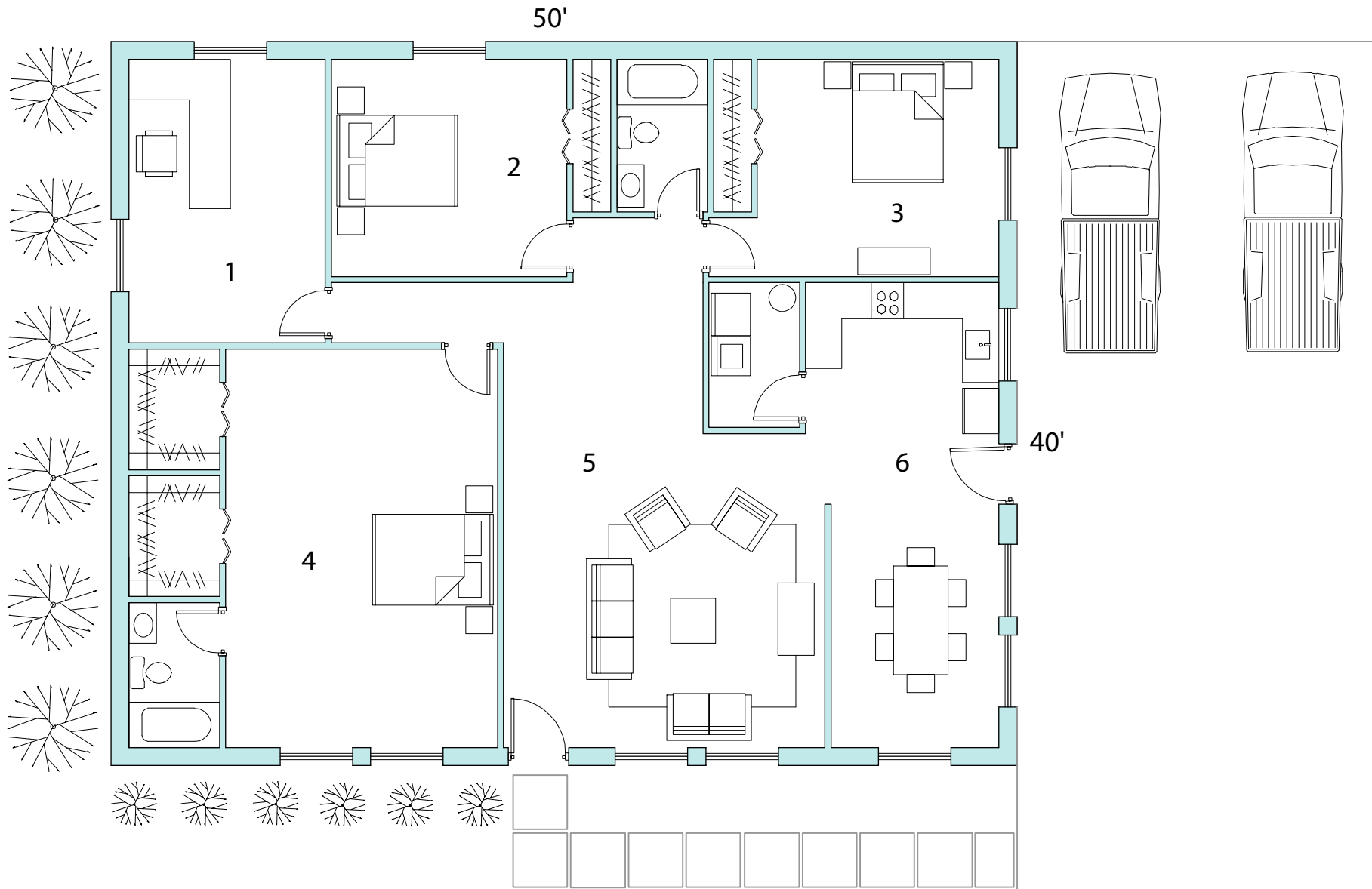
Copyright © 2003-2005 MetalBuildingDepot™. All Rights Reserved.

Not too big and not too small. These 2000 Sq. Ft. homes are "just what the doctor ordered" for the average family.

2000 SQ. FT. HOMES



MetalBuildingDepot.Com[®]
an ICON Company

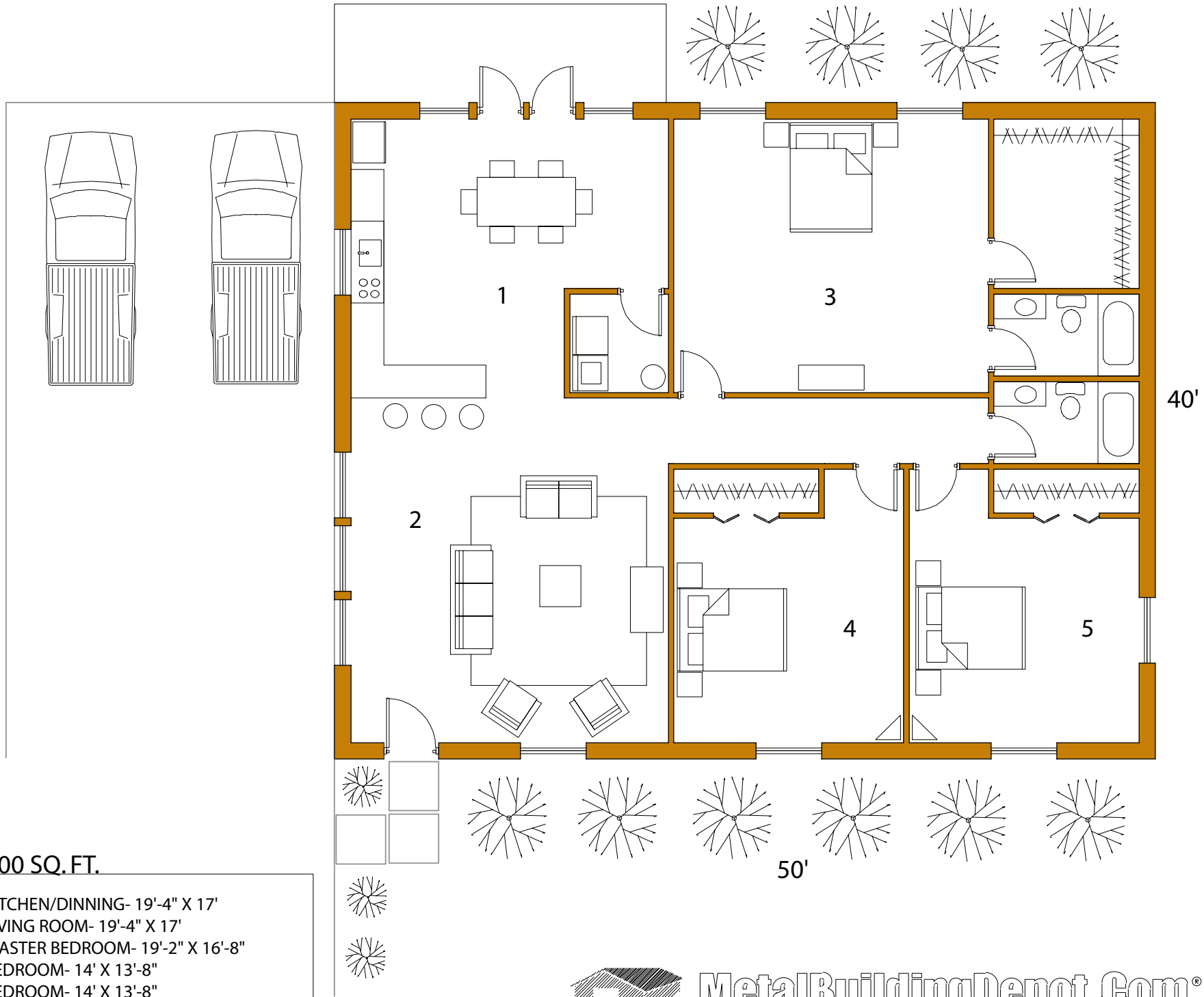


2000 SQ. FT.

- 1. OFFICE/BEDROOM- 10'-10" X 15'-8"
- 2. BEDROOM- 13' X 12'
- 3. BEDROOM- 13'-4" X 12'
- 4. MASTER BEDROOM- 15' X 22'
- 5. LIVING ROOM- 17'-8" X 14'
- 6. KITCHEN/DINNING- 9'-3" X 25'-8"



FALL



2000 SQ. FT.

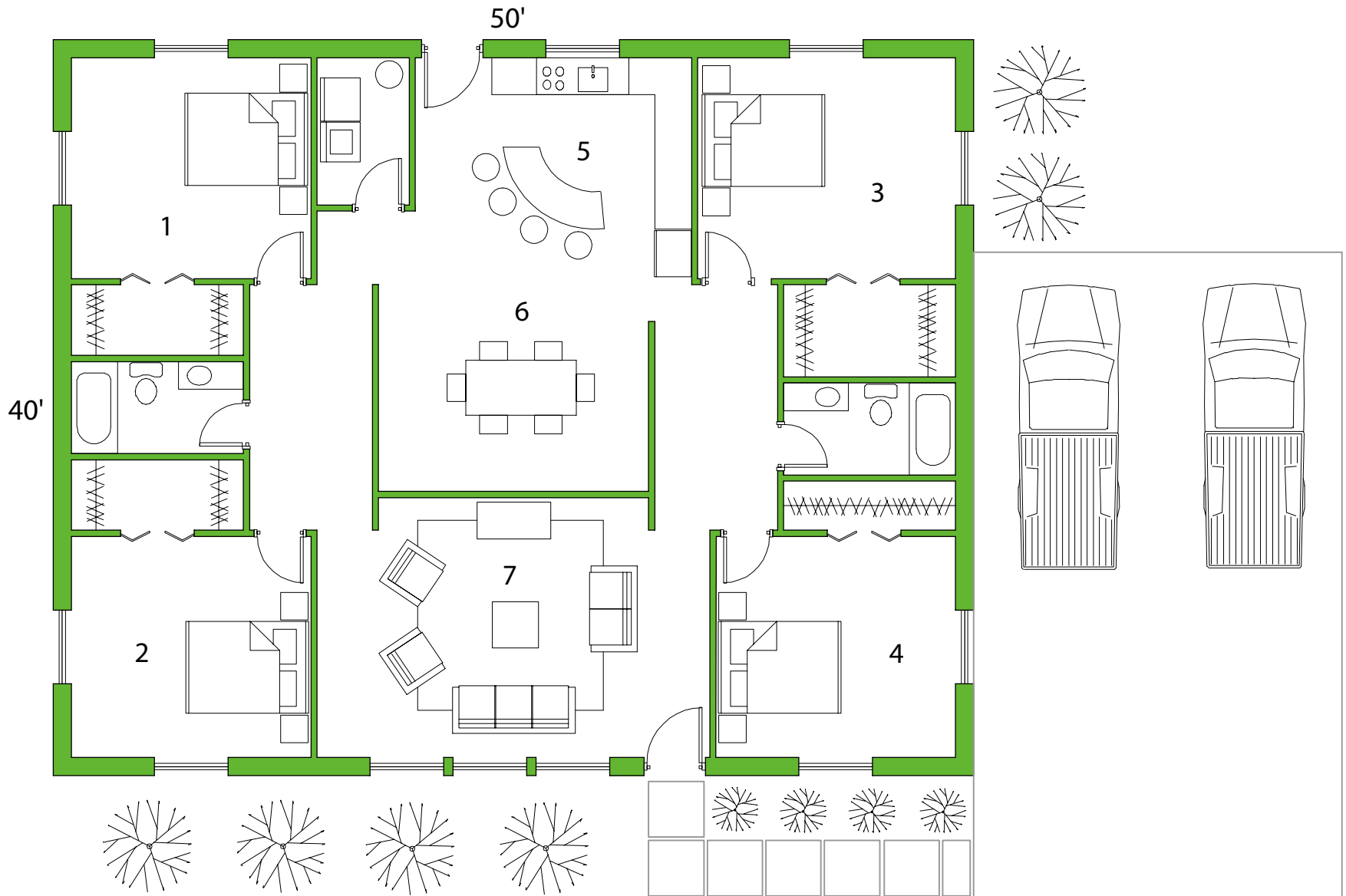
- 1.KITCHEN/DINNING- 19'-4" X 17'
- 2.LIVING ROOM- 19'-4" X 17'
- 3.MASTER BEDROOM- 19'-2" X 16'-8"
- 4.BEDROOM- 14' X 13'-8"
- 5.BEDROOM- 14' X 13'-8"



MetalBuildingDepot.Com[®]
an ICON Company

Copyright © 2003-2005 MetalBuildingDepot™. All Rights Reserved.

CLOVERLEAF



2000 SQ. FT.

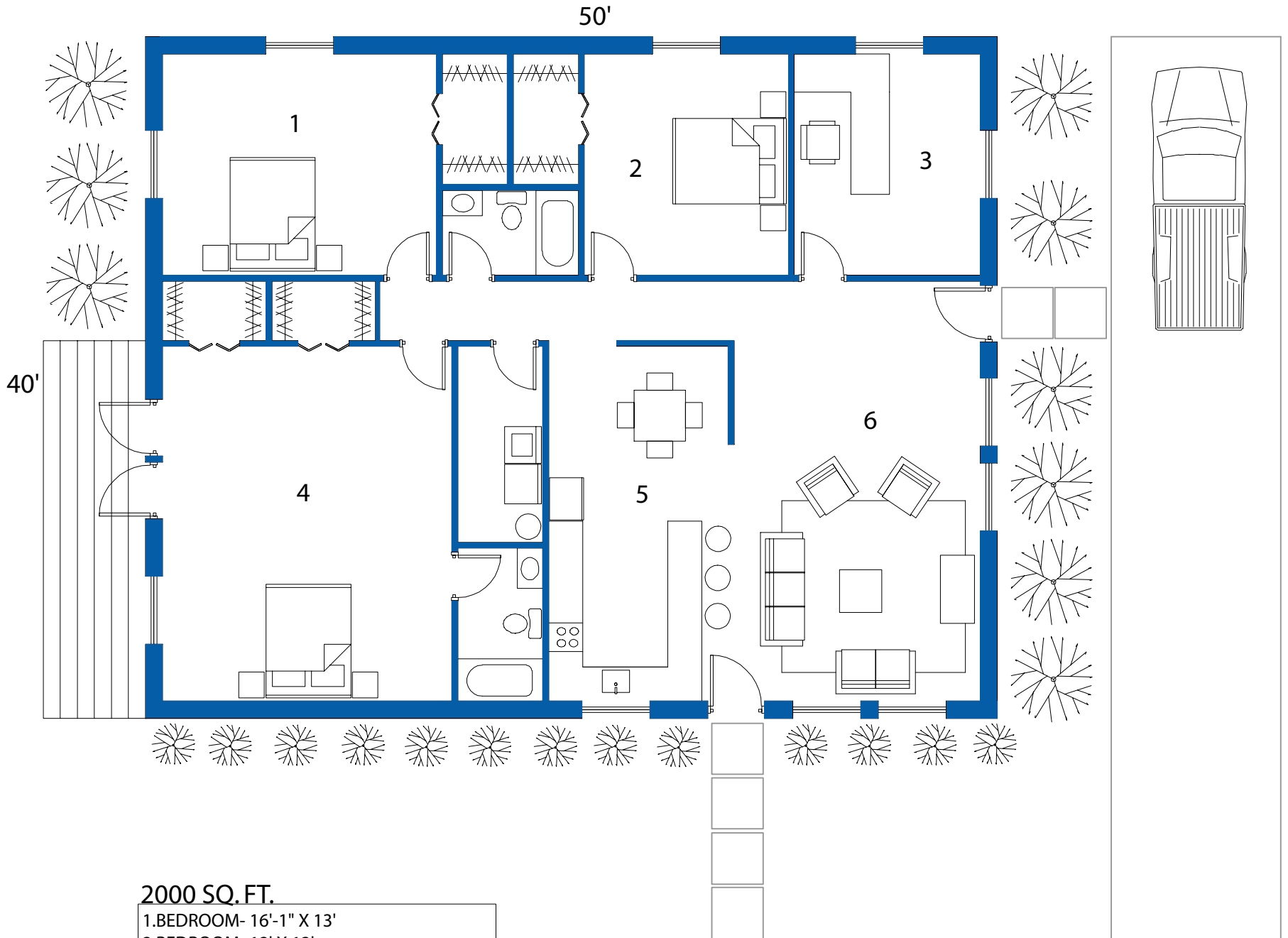
- 1. BEDROOM- 13' X 12'
- 2. BEDROOM- 13' X 12'
- 3. BEDROOM- 14' X 12'
- 4. BEDROOM- 13' X 12'
- 5. KITCHEN- 15' X 12'-4"
- 6. DINNING ROOM- 14'-8" X 11'-2"
- 7. LIVING ROOM- 21'-4" X 14'



MetalBuildingDepot.Com
an ICON Company

Copyright © 2003-2005 MetalBuildingDepot™. All Rights Reserved.

BERNARD



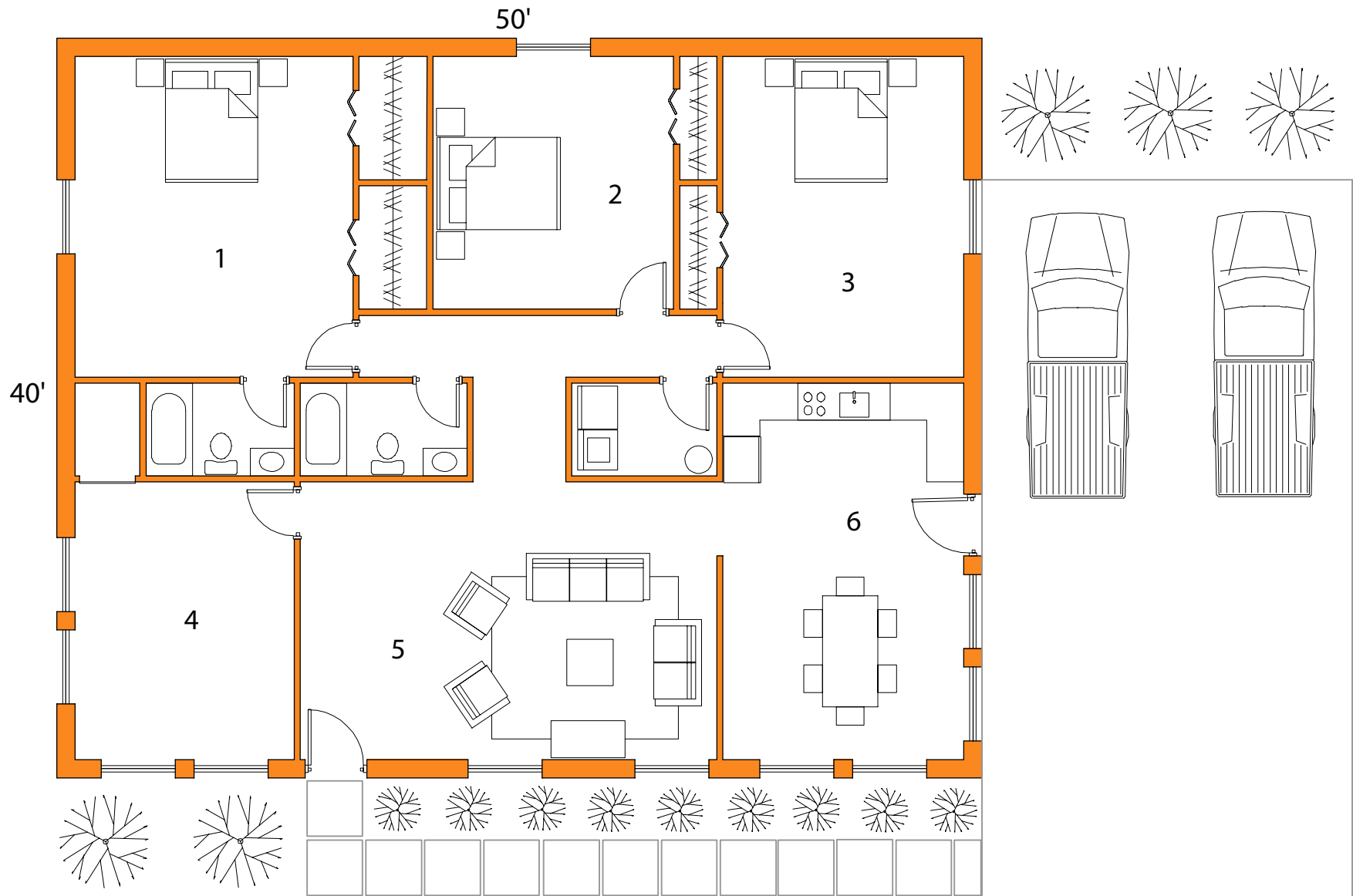
2000 SQ. FT.

- 1. BEDROOM- 16'-1" X 13'
- 2. BEDROOM- 12' X 13'
- 3. STUDY- 10'-11" X 13'
- 4. MASTER BEDROOM- 17' X 20'-10"
- 5. KITCHEN/DINNING- 10'-6" X 20'-10"
- 6. LIVING ROOM- 14'-5" X 21'-2"



MetalBuildingDepot.Com
an ICON Company

Copyright © 2003-2005 MetalBuildingDepot™. All Rights Reserved.



2000 SQ. FT.

- 1. BEDROOM- 15' X 17'-4"
- 2. BEDROOM- 13' X 13'-8"
- 3. BEDROOM- 13' X 17'-4"
- 4. BEDROOM/STUDY- 11'-10" X 15'
- 5. LIVING ROOM- 22'-6" X 15'
- 6. KITCHEN/DINNING- 13' X 20'-4"

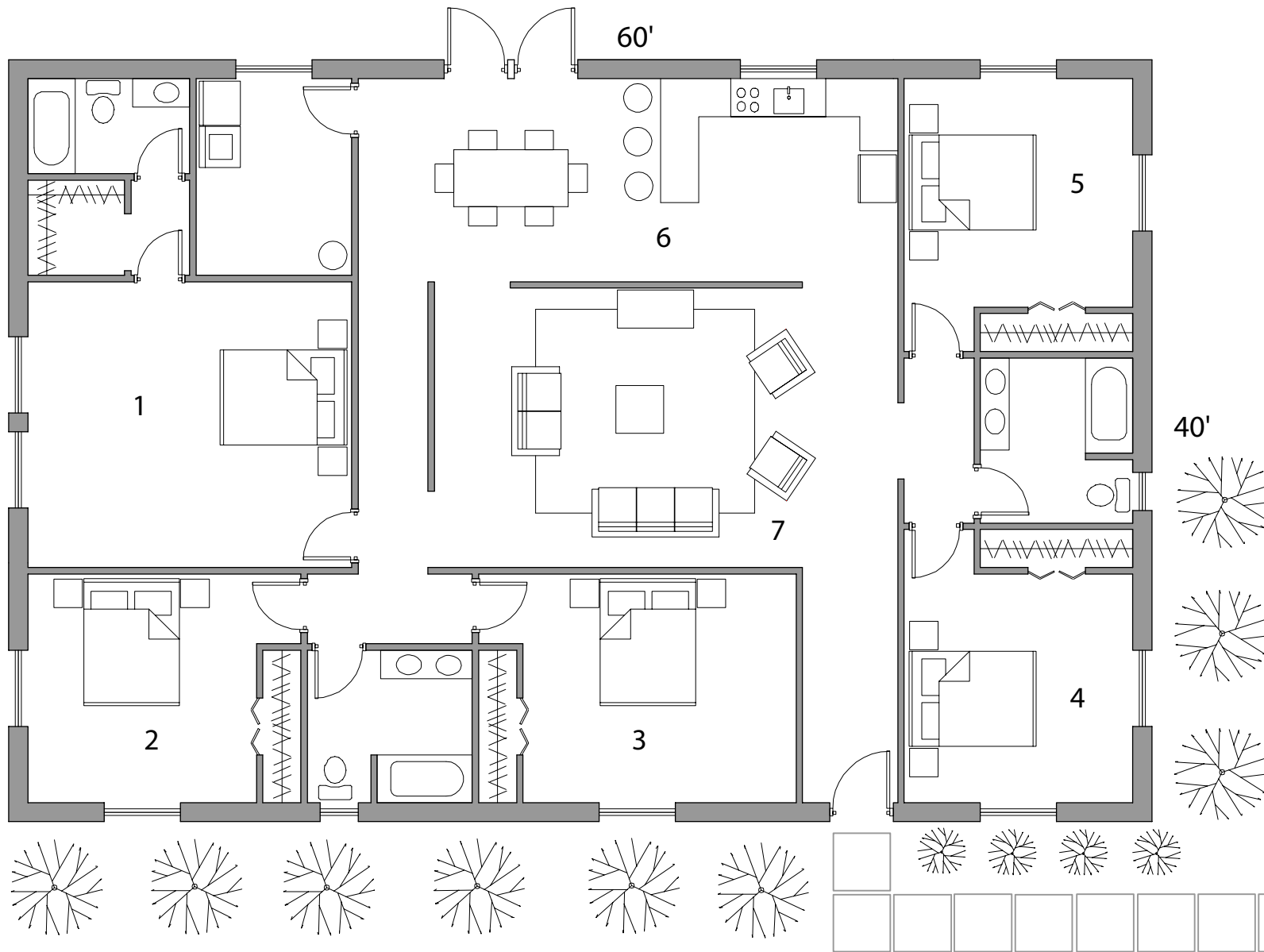


Kids fighting over a room or just want larger bedrooms? These three, four, or five bedroom 2400 Sq. Ft. homes are ideal for a large family.

2400 SQ. FT. HOMES



SHADYOAK



2400 SQ. FT.

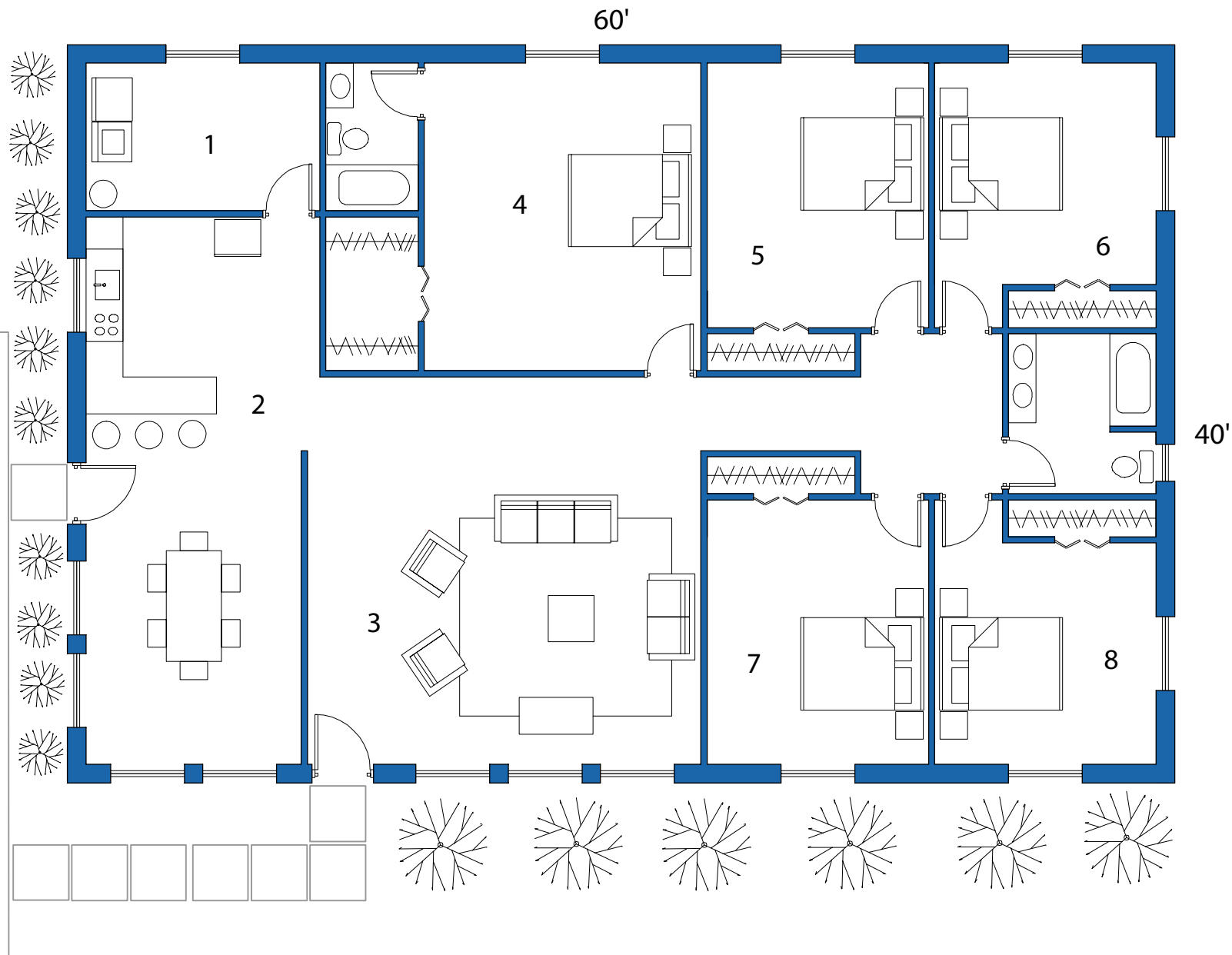
- 1. MASTER BEDROOM- 17' X 15'
- 2. BEDROOM- 12' X 12'
- 3. BEDROOM- 14'-4" X 12'
- 4. BEDROOM- 12' X 12'
- 5. BEDROOM- 12' X 12'
- 6. KITCHEN/DINNING- 28'-4" X 10'-8"
- 7. LIVING ROOM- 19'-4" X 14'-8"



MetalBuildingDepot.Com
an ICON Company

Copyright © 2003-2005 MetalBuildingDepot™. All Rights Reserved.

RIVERSIDE



2400 SQ. FT.

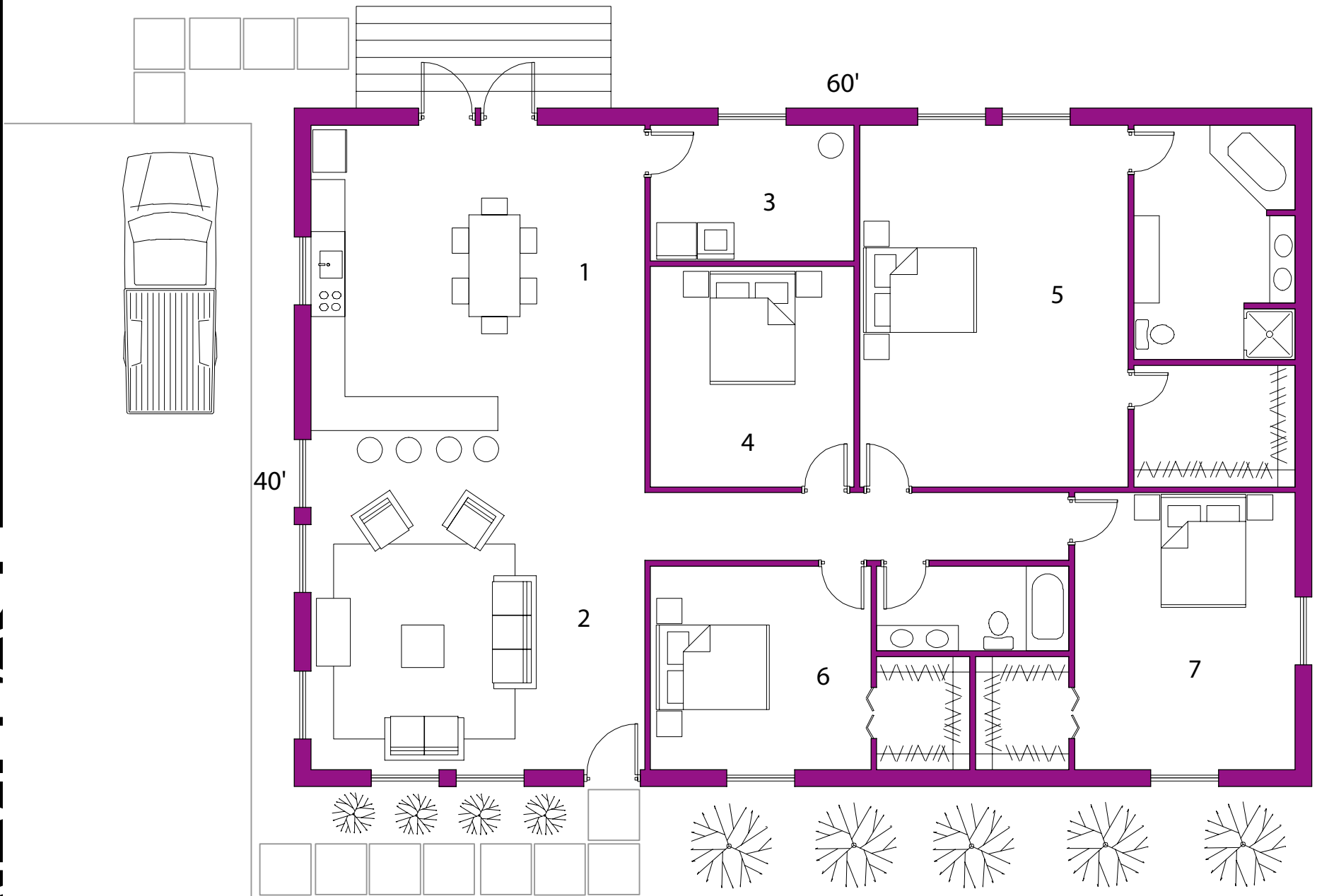
- 1. UTILITY- 12'-8" X 8'
- 2. KITCHEN/DINNING- 11'-8" X 29'-8"
- 3. LIVING ROOM- 21'-4" X 17'
- 4. MASTER BEDROOM- 15' X 16'-8"
- 5. BEDROOM- 12' X 14'-4"
- 6. BEDROOM- 12' X 12'
- 7. BEDROOM- 12' X 14'-4"
- 8. BEDROOM- 12' X 12'



MetalBuildingDepot.Com[®]
an ICON Company

Copyright © 2003-2005 MetalBuildingDepot™. All Rights Reserved.

BAYVILLAGE



2400 SQ. FT.

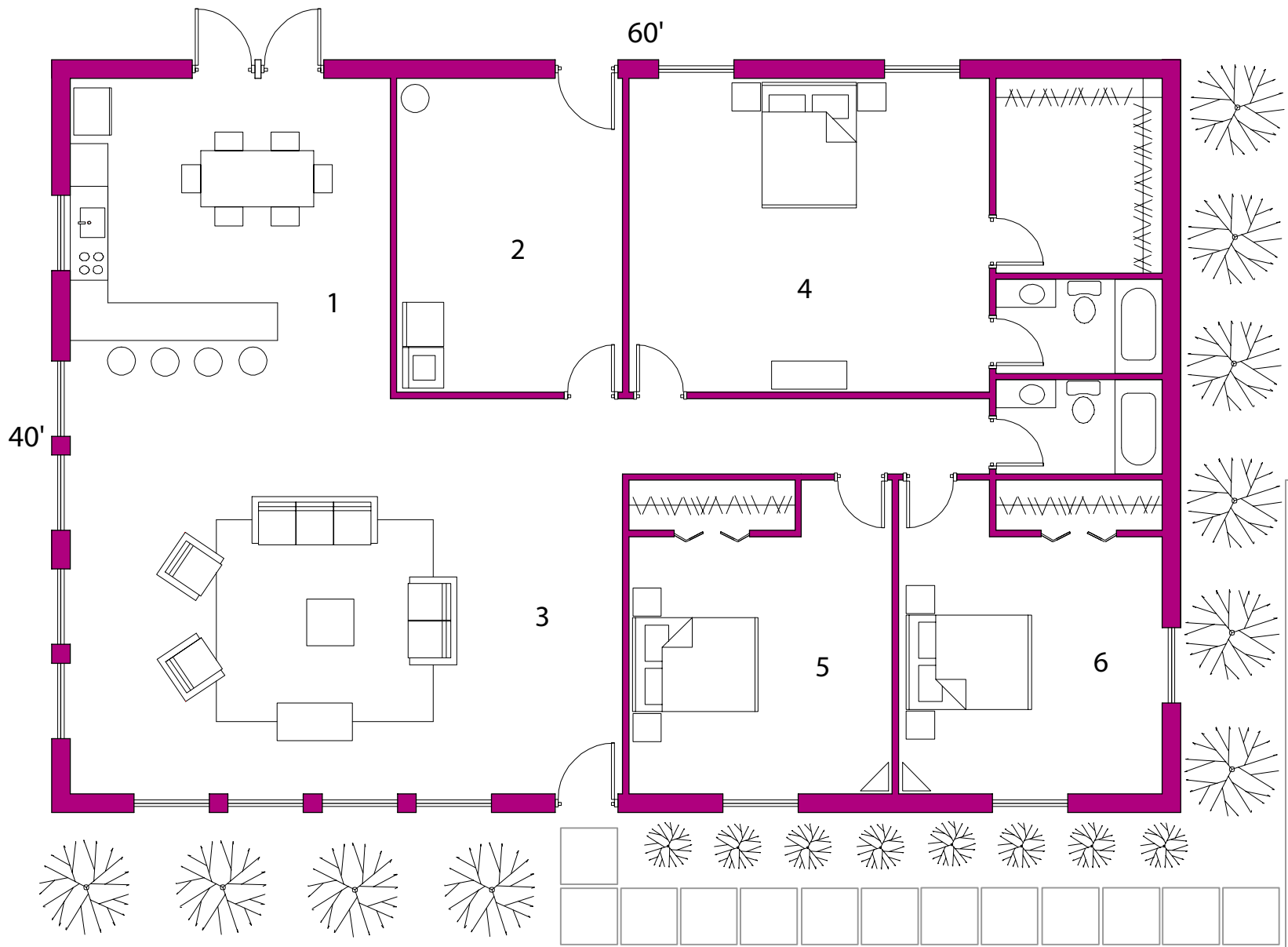
- 1. KITCHEN/DINNING- 19'-8" X 21'-8"
- 2. LIVING ROOM- 19'-8" X 16'-4"
- 3. UTILITY ROOM- 12' X 8'
- 4. BEDROOM- 12' X 13'
- 5. MASTER BEDROOM- 15'-10" X 21'-8"
- 6. BEDROOM- 13' X 12'
- 7. BEDROOM- 13' X 16'-4"



MetalBuildingDepot.Com[®]
an ICON Company

Copyright © 2003-2005 MetalBuildingDepot™. All Rights Reserved.

PONDSIDE



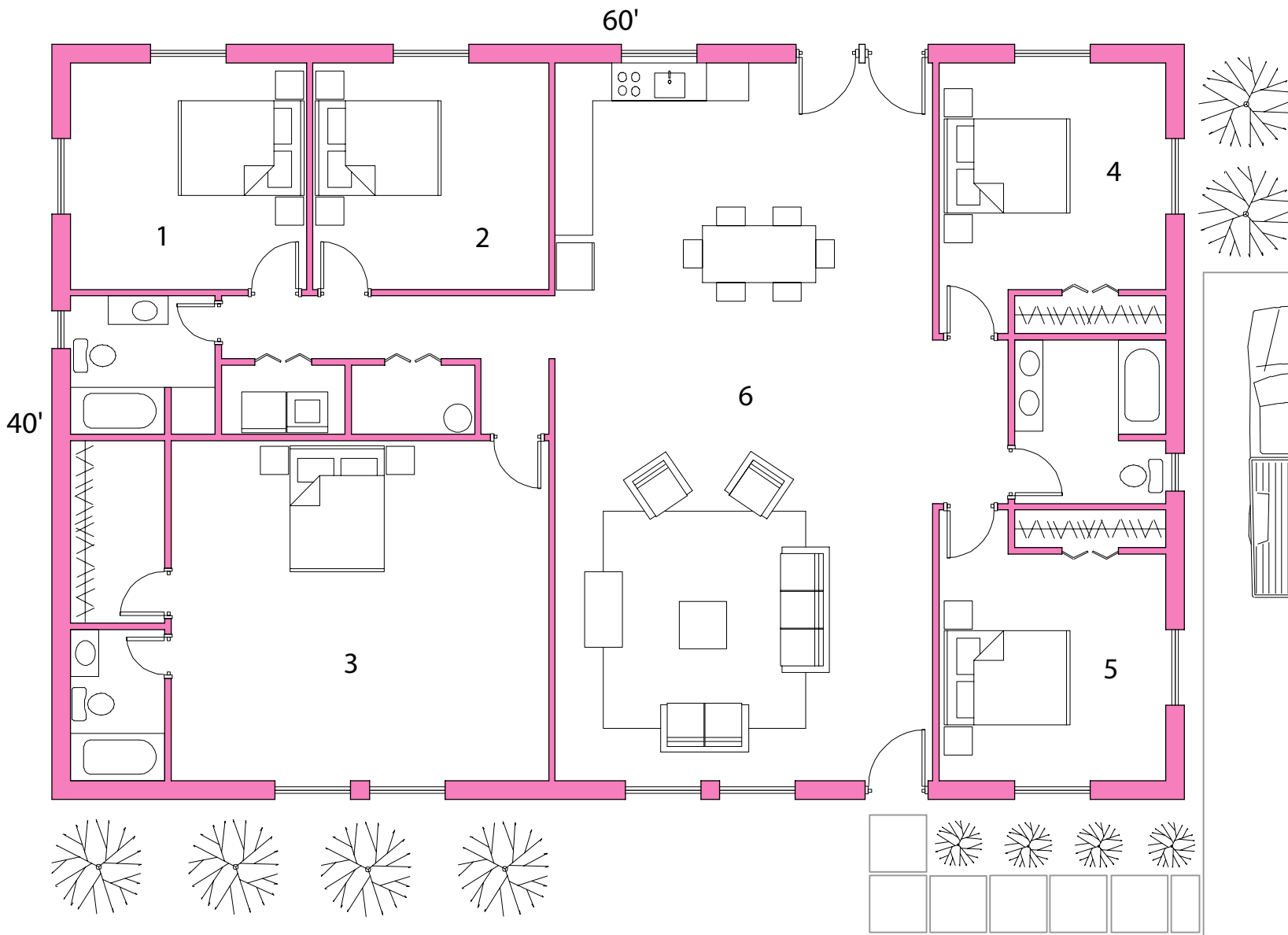
2400 SQ. FT.

- 1. KITCHEN/DINNING- 17' X 17'
- 2. UTILITY ROOM- 12' X 16'-8"
- 3. LIVING ROOM- 29'-4" X 17'
- 4. MASTER BEDROOM- 19'-2" X 16'-8"
- 5. BEDROOM- 14' X 13'-8"
- 6. BEDROOM- 14' X 13'-8"



MetalBuildingDepot.Com
an ICON Company

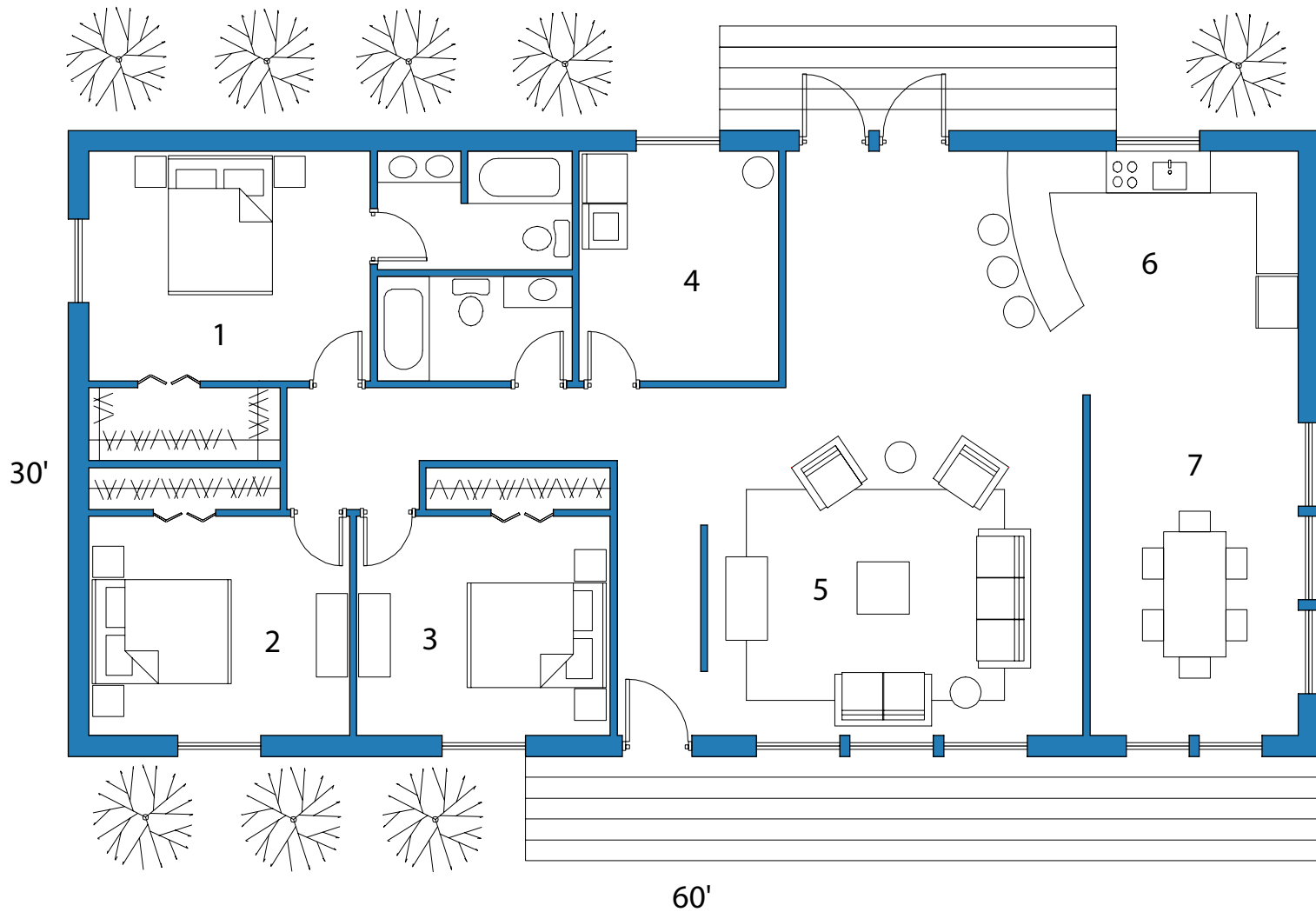
Copyright © 2003-2005 MetalBuildingDepot™. All Rights Reserved.



- 2400 SQ. FT.**
- 1. BEDROOM- 12'-6" X 12'
 - 2. BEDROOM- 12'-6" X 12'
 - 3. MASTER BEDROOM- 20' X 18'
 - 4. BEDROOM- 12' X 12'
 - 5. BEDROOM- 12' X 12'
 - 6. KITCHEN/DINNING/LIVING- 20' X 38'



RIVEROAK



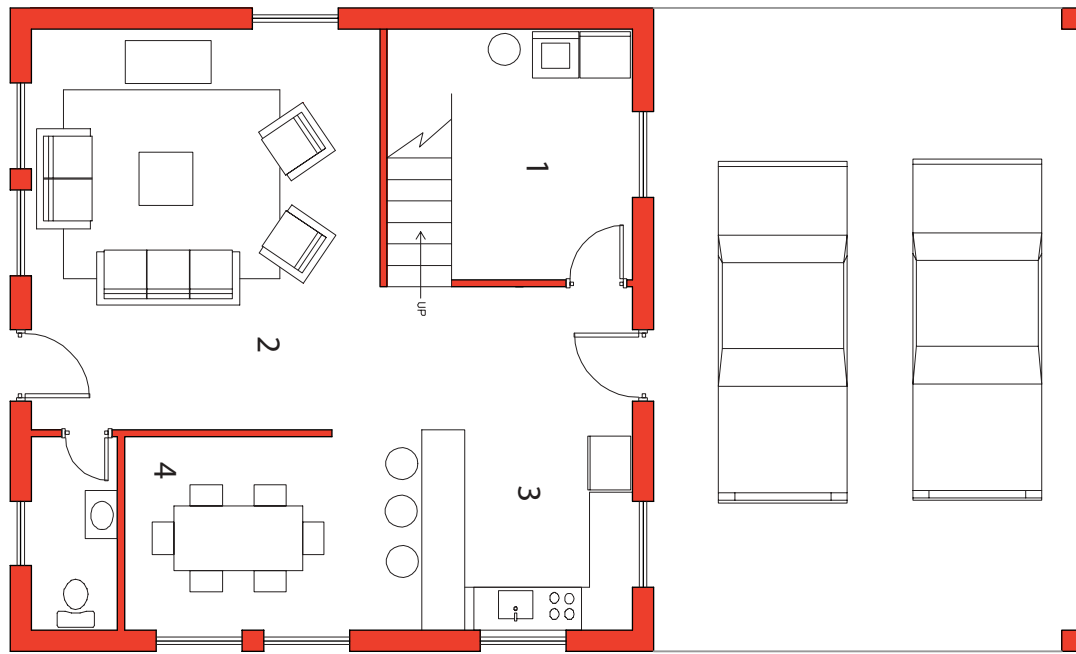
1800 SQ. FT.

- 1.MASTER BEDROOM- 13'-6" X 11'
- 2.BEDROOM- 12'-6" X 10'-6"
- 3.BEDROOM- 12'-2" X 10'-6"
- 4.UTILITY/STORAGE- 9'-7" X 11'
- 5.LIVING ROOM- 18' X 13'-2"
- 6.KITCHEN- 16'-9" X 11'-8"
- 7.DINNING ROOM- 10' X 16'-4"

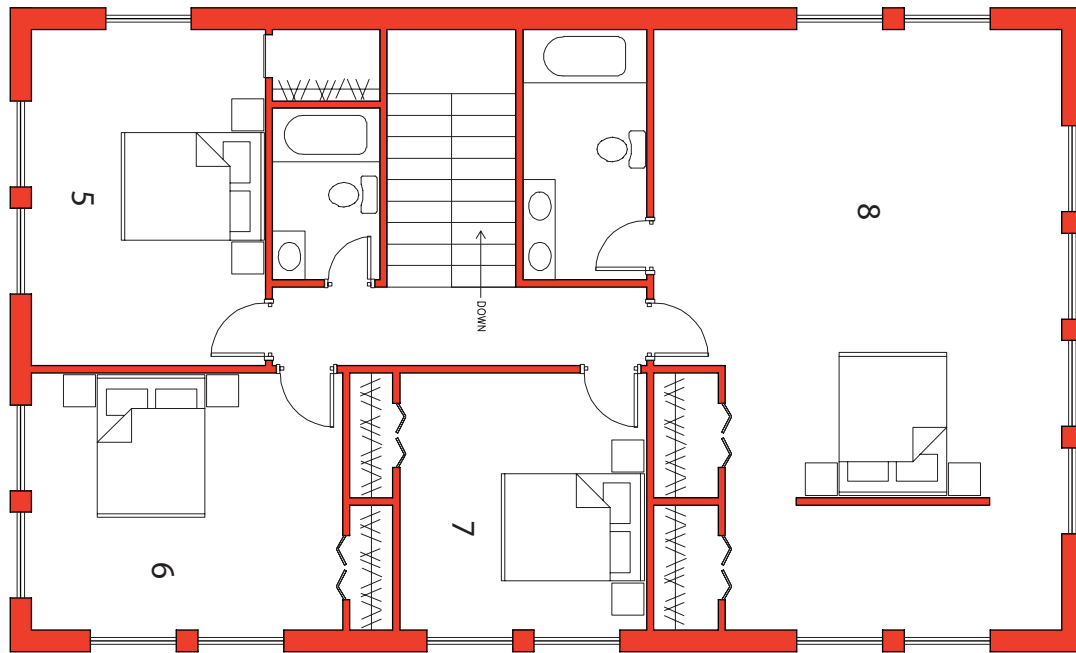


MetalBuildingDepot.Com[®]
an ICON Company

Copyright © 2003-2005 MetalBuildingDepot[™]. All Rights Reserved.



FIRST FLOOR



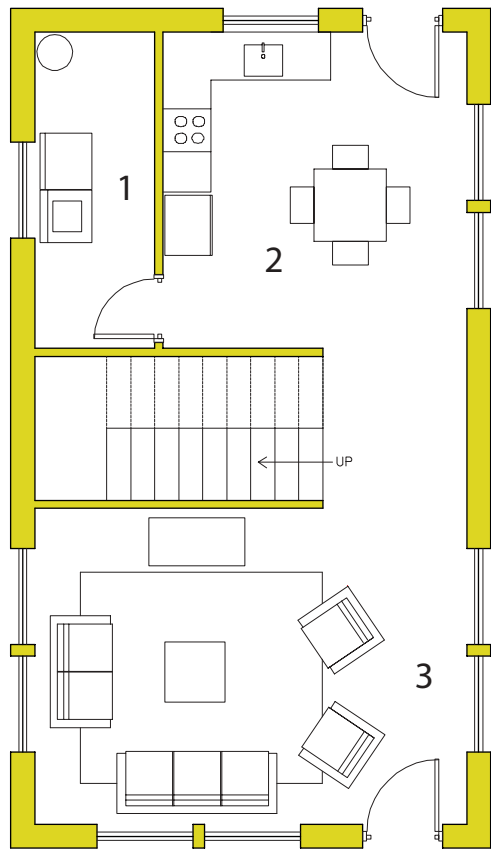
SECOND FLOOR



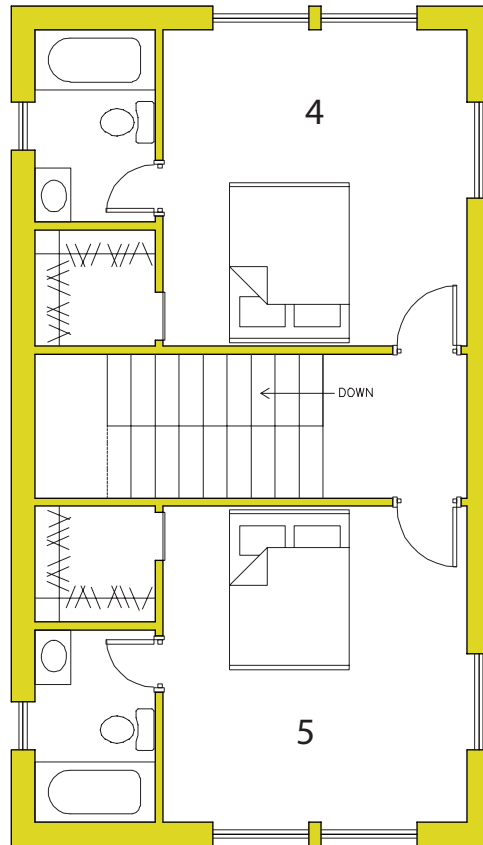
2400 SQ. FT.

- 1.UTILITY/STORAGE- 11'-8" X 8'-5"
- 2.LIVING ROOM- 18'-8" X 16'-2"
- 3.KITCHEN- 9' X 9'-10"
- 4.DINNING ROOM- 9' X 9'-8"
- 5.BEDROOM- 15'-8" X 10'-10"
- 6.BEDROOM- 12' X 14'-6"
- 7.BEDROOM- 12' X 11'-6"
- 8.MASTER BEDROOM- 28' X 15'-8"





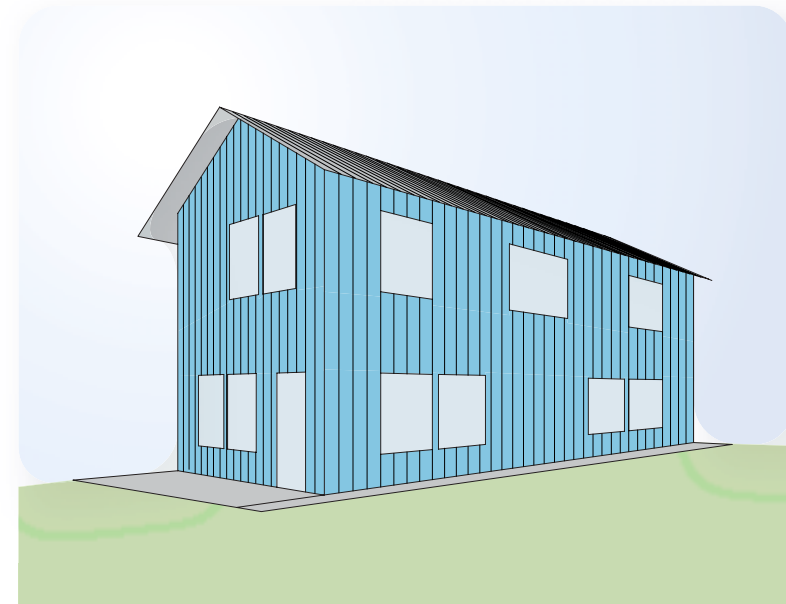
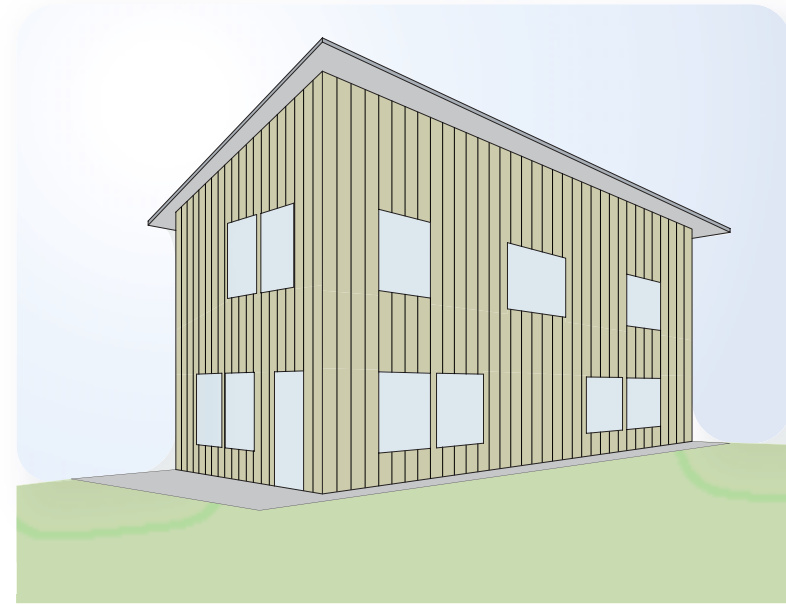
FIRST FLOOR



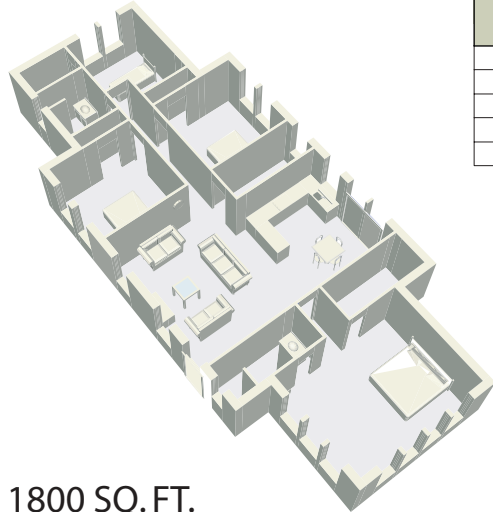
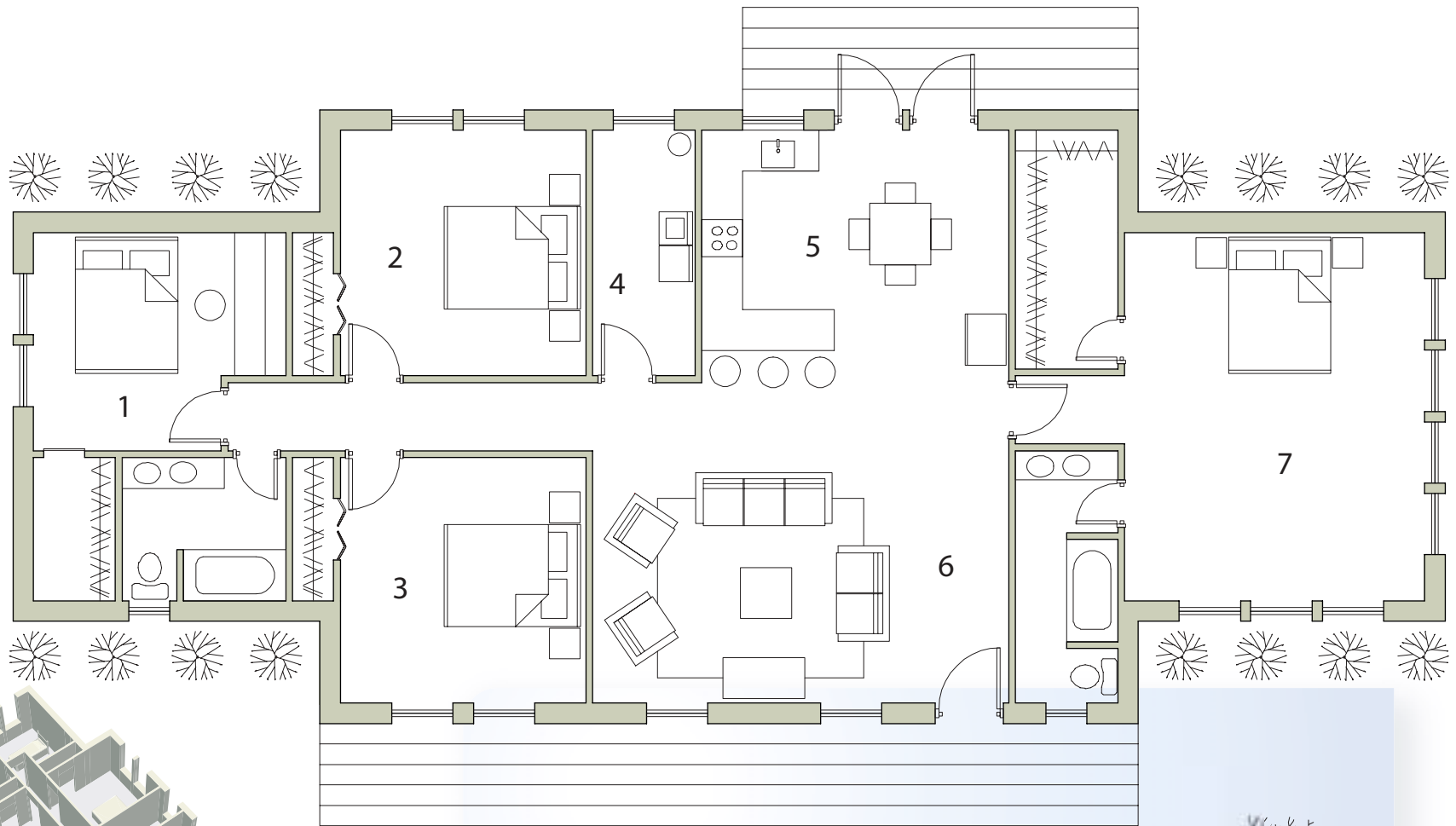
SECOND FLOOR

1400 SQ. FT.

- 1. UTILITY/STORAGE- 5' x 13'-2"
- 2. KITCHEN/DINING- 12'-8" X 13'-2"
- 3. LIVING ROOM- 18' X 13'-2"
- 4. BEDROOM- 12'-8" X 13'-2"
- 5. BEDROOM- 12'-8" X 13'-2"

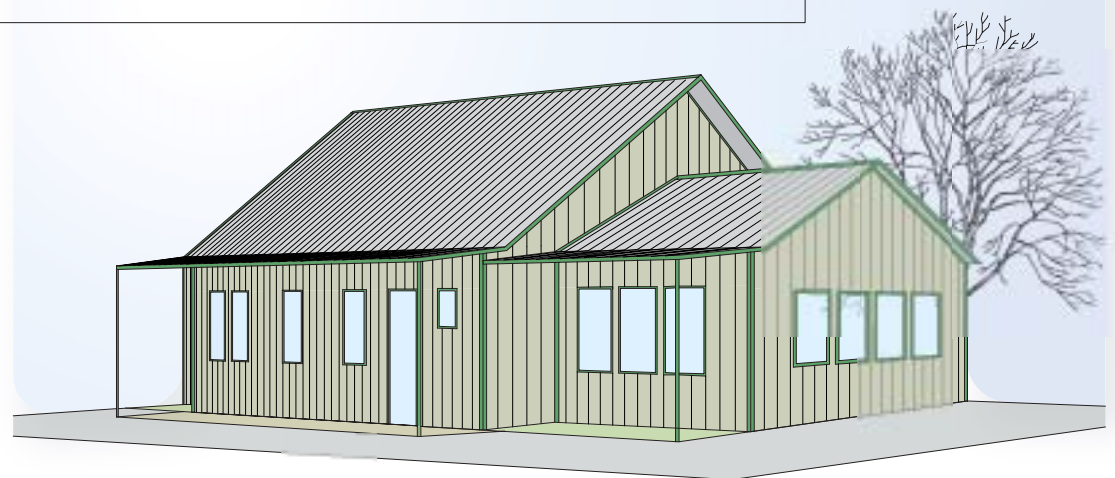


COUNTRYSIDE



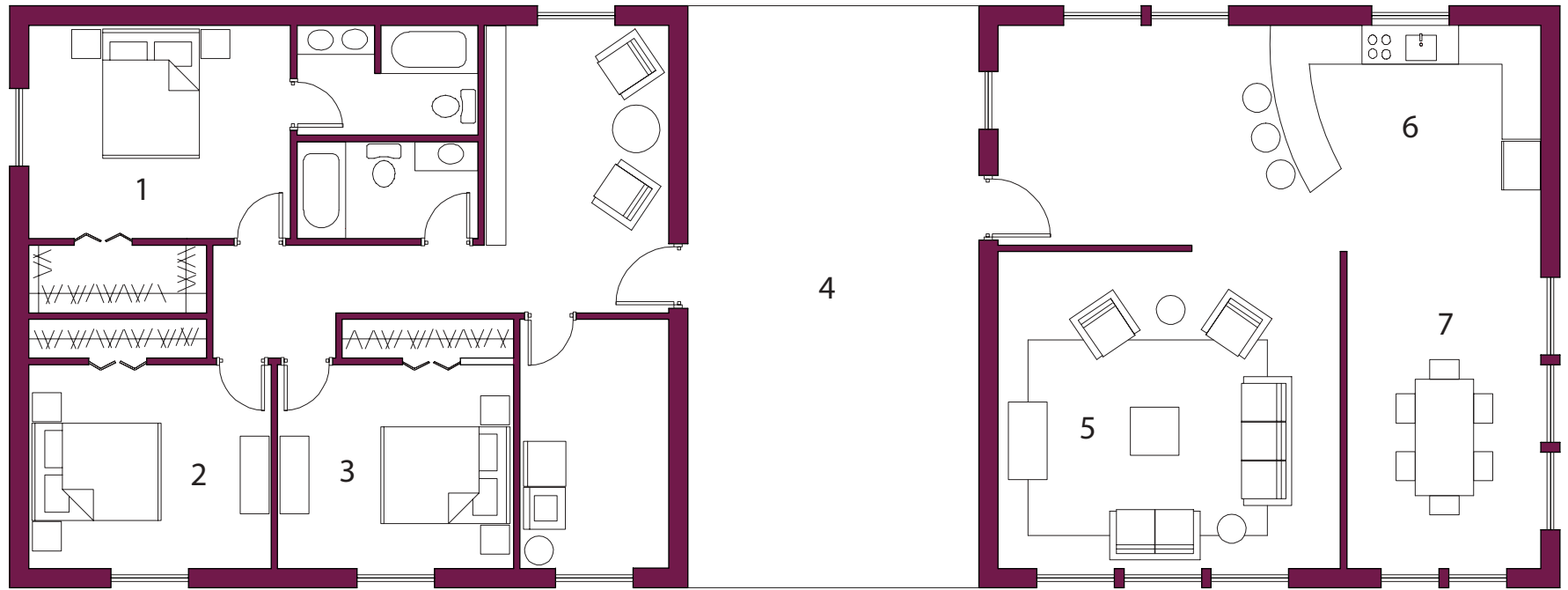
1800 SQ. FT.

- 1.OFFICE/BEDROOM- 12'-4" X 10'-8"
- 2.BEDROOM- 12' X 12'
- 3.BEDROOM- 12' X 12'
- 4.UTILITY- 5' X 12'
- 5.KITCHEN/DINNING- 15' X 12'-4"
- 6.LIVING ROOM- 20'-4" X 12'-4"
- 7.MASTER BEDROOM- 14'-8" X 18'



MetalBuildingDepot.Com[®]
an ICON Company

Copyright © 2003-2005 MetalBuildingDepot™. All Rights Reserved.



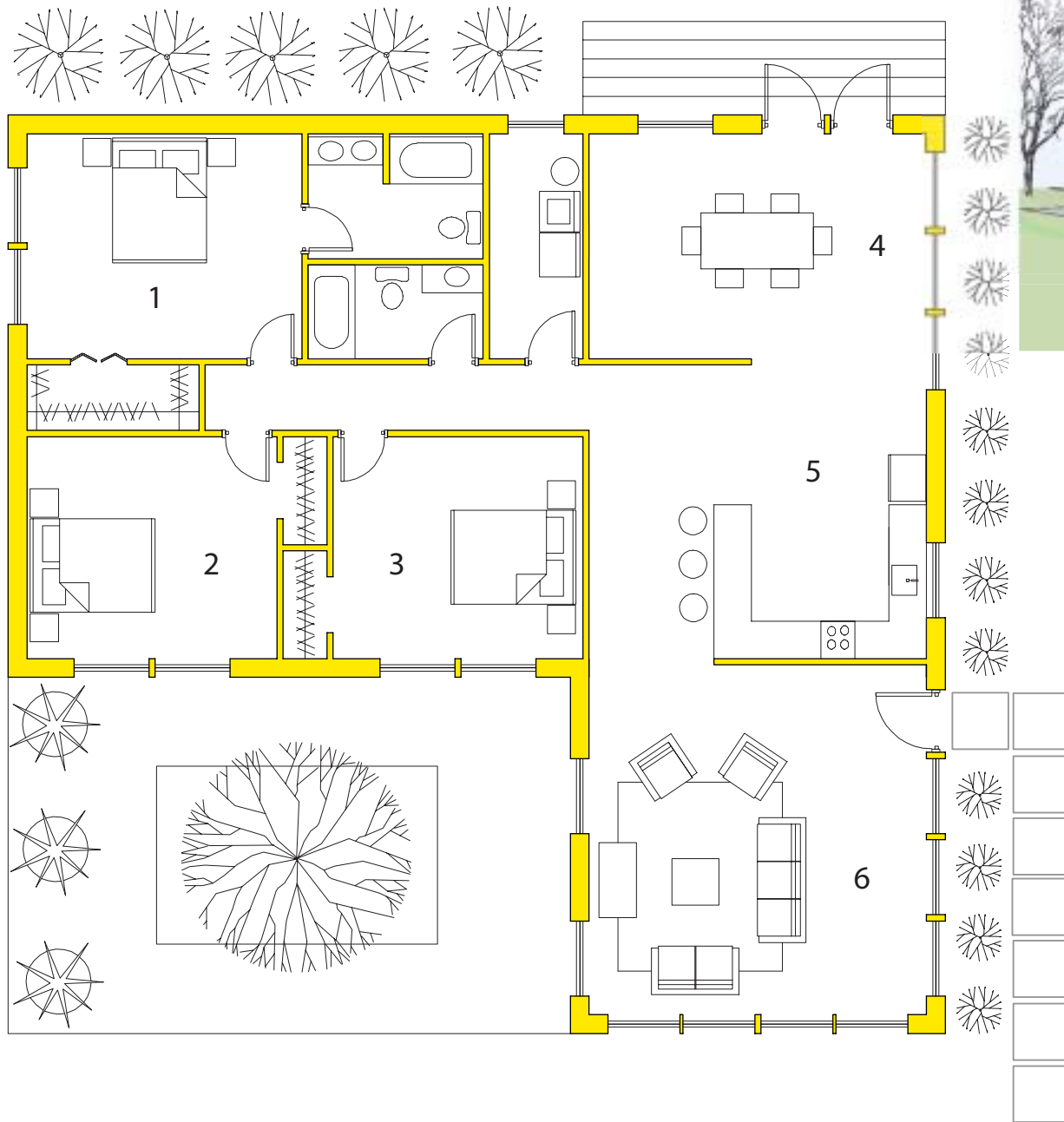
2400 SQ. FT.

- 1. MASTER BEDROOM- 13'-6" X 11'
- 2. BEDROOM- 12'-6" X 10'-6"
- 3. BEDROOM- 12'-2" X 10'-6"
- 4. OPEN SPACE- 15' X 30'
- 5. LIVING ROOM- 17'-8" X 16'-4"
- 6. KITCHEN- 16' X 11'-8"
- 7. DINNING ROOM- 10' X 16'-4"



MetalBuildingDepot.Com[®]
an ICON Company

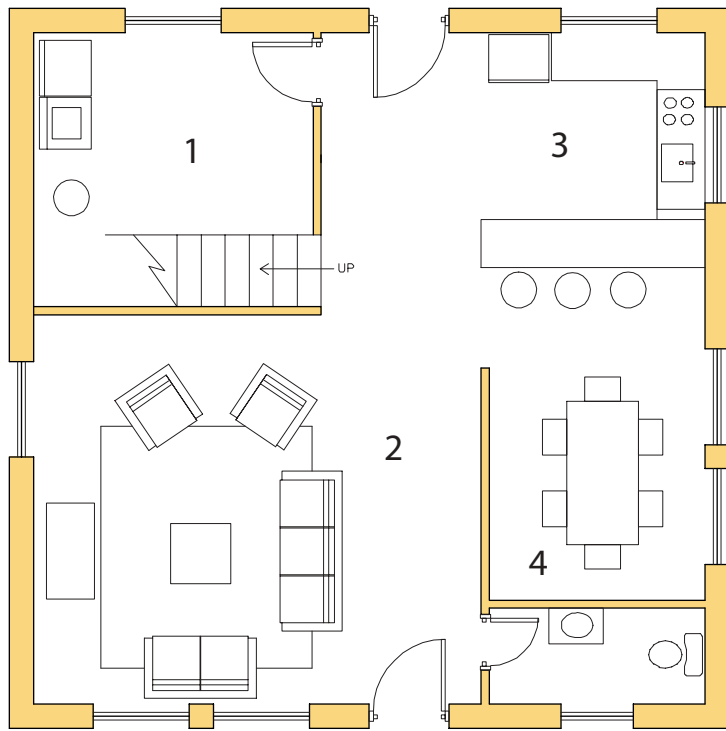
SUNFLOWER



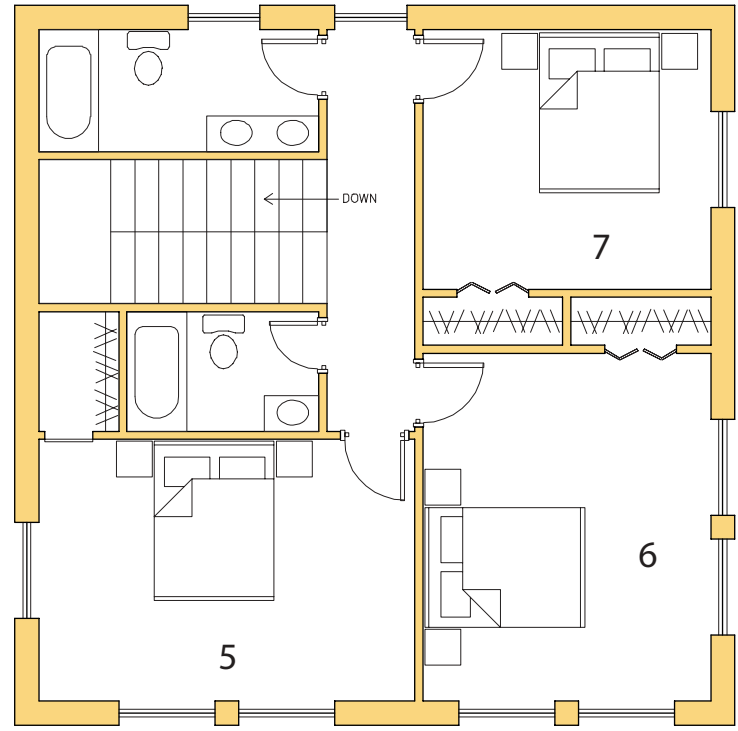
- 1880 SQ. FT.**
- 1. MASTER BEDROOM- 14'-8" X 12'
 - 2. BEDROOM- 13'-4" X 11'-10"
 - 3. BEDROOM- 13'-4" X 11'-10"
 - 4. DINNING- 18' X 12'
 - 5. KITCHEN- 11'-4" X 15'-8"
 - 6. LIVING ROOM- 18' X 18'-8"



MetalBuildingDepot.Com
an ICON Company



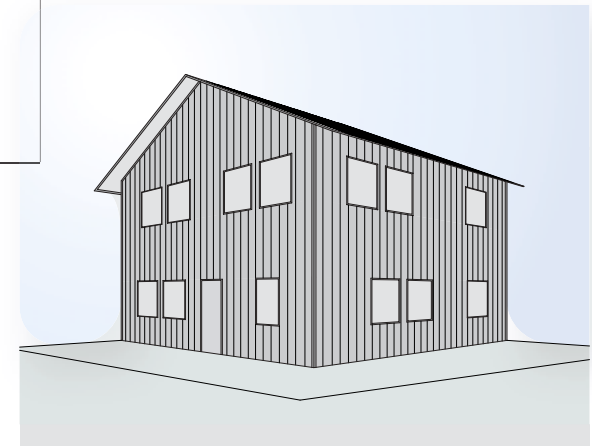
FIRST FLOOR



SECOND FLOOR

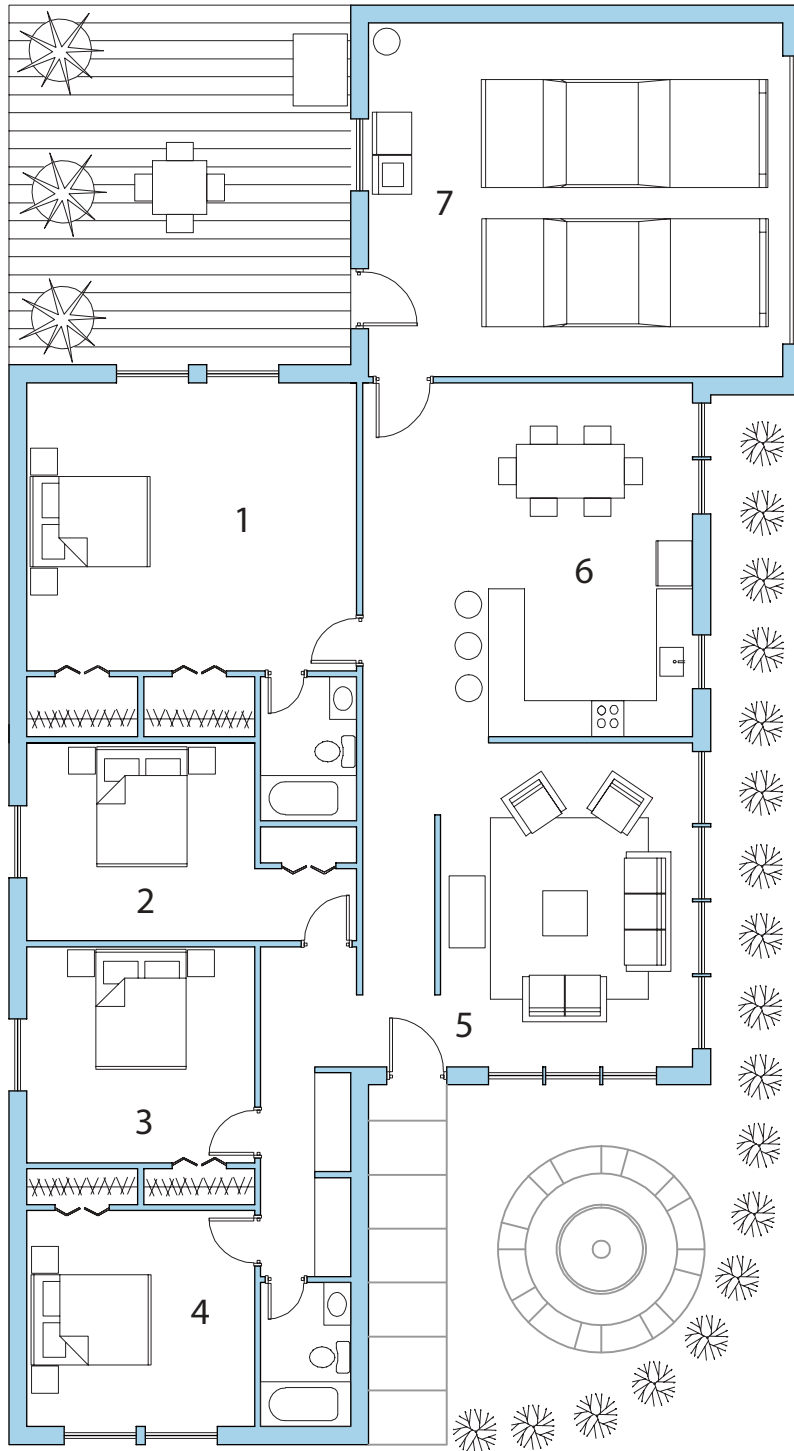
1800 SQ. FT.

- 1.UTILITY/STORAGE- 11'-8" X 8'-5"
- 2.LIVING ROOM- 18'-8" X 16'-2"
- 3.KITCHEN- 9' X 9'-10"
- 4.DINNING ROOM- 9' X 9'-8"
- 5.BEDROOM- 15'-8" X 10'-10"
- 6.BEDROOM- 12' X 14'-6"
- 7.BEDROOM- 12' X 11'-6"



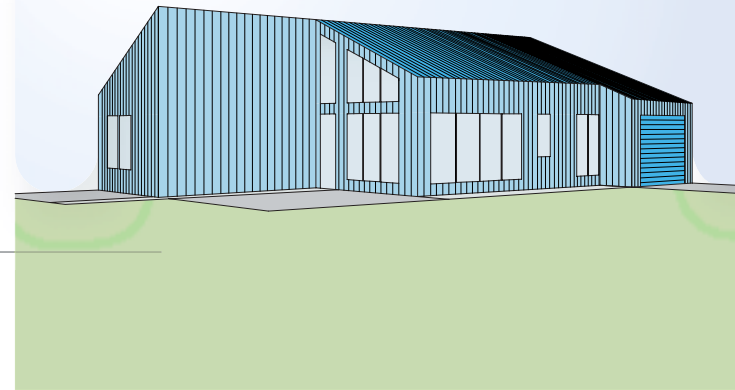
MetalBuildingDepot.Com[®]
an ICON Company

DESIRE



2468 SQ. FT.

- 1. MASTER BEDROOM- 18'-4" X 16'
- 2. BEDROOM- 12'-8" X 11'
- 3. BEDROOM- 12'-8" X 12'
- 4. BEDROOM- 12'-8" X 12'
- 5. LIVING ROOM- 14' X 18'
- 6. KITCHEN/DINNING- 18'-4" X 19'-8"
- 7. GARAGE/UTILITY- 23' X 19'-8"



MetalBuildingDepot.Com
an ICON Company

Copyright © 2003-2005 MetalBuildingDepot™. All Rights Reserved.

STEEL HOMES



MetalBuildingDepot.Com[®]
an ICON Company

Copyright © 2003-2005 MetalBuildingDepot™. All Rights Reserved.

STEEL HOMES



MetalBuildingDepot.Com[®]
an ICON Company

Copyright © 2003-2005 MetalBuildingDepot™. All Rights Reserved.